

MCPH1 Antibody (monoclonal) (M07)

Mouse monoclonal antibody raised against a partial recombinant MCPH1.

Catalog # AT2823a

Product Information

Application	WB, E
Primary Accession	Q8NEM0
Other Accession	NM_024596
Reactivity	Human
Host	mouse
Clonality	monoclonal
Isotype	IgG1 Kappa
Clone Names	5C9
Calculated MW	92849

Additional Information

Gene ID	79648
Other Names	Microcephalin, MCPH1
Target/Specificity	MCPH1 (NP_078872, 399 a.a. ~ 487 a.a) partial recombinant protein with GST tag. MW of the GST tag alone is 26 KDa.
Dilution	WB~~1:500~1000 E~~N/A
Format	Clear, colorless solution in phosphate buffered saline, pH 7.2 .
Storage	Store at -20°C or lower. Aliquot to avoid repeated freezing and thawing.
Precautions	MCPH1 Antibody (monoclonal) (M07) is for research use only and not for use in diagnostic or therapeutic procedures.

Background

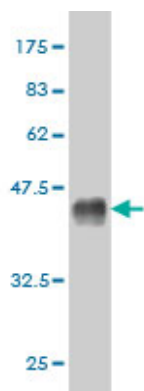
This gene encodes a DNA damage response protein. The encoded protein may play a role in G2/M checkpoint arrest via maintenance of inhibitory phosphorylation of cyclin-dependent kinase 1. Mutations in this gene have been associated with primary autosomal recessive microcephaly 1 and premature chromosome condensation syndrome. Alternatively spliced transcript variants have been described.

References

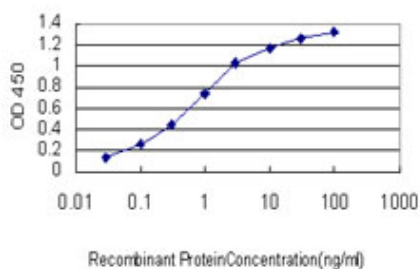
Physiogenomic analysis of statin-treated patients: domain-specific counter effects within the ACACB gene on low-density lipoprotein cholesterol? Rua?o G, et al. Pharmacogenomics, 2010 Jul. PMID 20602615. Centrosome-related genes, genetic variation, and risk of breast cancer. Olson JE, et al. Breast

Cancer Res Treat, 2010 May 28. PMID 20508983.Common polymorphisms in ITGA2, PON1 and THBS2 are associated with coronary atherosclerosis in a candidate gene association study of the Chinese Han population. Wang Y, et al. J Hum Genet, 2010 Aug. PMID 20485444.Personalized smoking cessation: interactions between nicotine dose, dependence and quit-success genotype score. Rose JE, et al. Mol Med, 2010 Jul-Aug. PMID 20379614.BRIT1/MCPH1 is essential for mitotic and meiotic recombination DNA repair and maintaining genomic stability in mice. Liang Y, et al. PLoS Genet, 2010 Jan 22. PMID 20107607.

Images



Antibody Reactive Against Recombinant Protein.Western Blot detection against Immunogen (35.53 KDa) .



Detection limit for recombinant GST tagged MCPH1 is approximately 0.03ng/ml as a capture antibody.

Please note: All products are 'FOR RESEARCH USE ONLY. NOT FOR USE IN DIAGNOSTIC OR THERAPEUTIC PROCEDURES'.