

## MDH2 Antibody (monoclonal) (M06)

Mouse monoclonal antibody raised against a partial recombinant MDH2.

Catalog # AT2826a

### Product Information

---

<b>Application</b>	E
<b>Primary Accession</b>	<a href="#">P40926</a>
<b>Other Accession</b>	<a href="#">NM_005918</a>
<b>Reactivity</b>	Human
<b>Host</b>	mouse
<b>Clonality</b>	monoclonal
<b>Isotype</b>	IgG2a Kappa
<b>Clone Names</b>	2A7
<b>Calculated MW</b>	35503

### Additional Information

---

<b>Gene ID</b>	4191
<b>Other Names</b>	Malate dehydrogenase, mitochondrial, MDH2
<b>Target/Specificity</b>	MDH2 (NP_005909, 134 a.a. ~ 246 a.a) partial recombinant protein with GST tag. MW of the GST tag alone is 26 KDa.
<b>Dilution</b>	E~~N/A
<b>Format</b>	Clear, colorless solution in phosphate buffered saline, pH 7.2 .
<b>Storage</b>	Store at -20°C or lower. Aliquot to avoid repeated freezing and thawing.
<b>Precautions</b>	MDH2 Antibody (monoclonal) (M06) is for research use only and not for use in diagnostic or therapeutic procedures.

### Background

---

Malate dehydrogenase catalyzes the reversible oxidation of malate to oxaloacetate, utilizing the NAD/NADH cofactor system in the citric acid cycle. The protein encoded by this gene is localized to the mitochondria and may play pivotal roles in the malate-aspartate shuttle that operates in the metabolic coordination between cytosol and mitochondria.

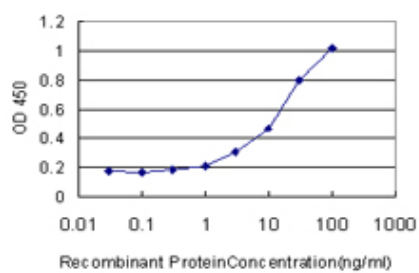
### References

---

1. Metabolomics-driven approach for the improvement of Chinese hamster ovary cell growth: overexpression of malate dehydrogenase II. Chong WP, Reddy SG, Yusufi FN, Lee DY, Wong NS, Heng CK, Yap MG, Ho YS. J Biotechnol. 2010 Apr 2. [Epub ahead of print]

## Images

---



Detection limit for recombinant GST tagged MDH2 is approximately 1ng/ml as a capture antibody.

Please note: All products are 'FOR RESEARCH USE ONLY. NOT FOR USE IN DIAGNOSTIC OR THERAPEUTIC PROCEDURES'.