

MDS028 Antibody (monoclonal) (M06)

Mouse monoclonal antibody raised against a full length recombinant MDS028.

Catalog # AT2828a

Product Information

Application	WB, IF, E
Primary Accession	Q969R8
Other Accession	BC006552
Reactivity	Human
Host	mouse
Clonality	monoclonal
Isotype	IgG1 Kappa
Clone Names	3D7
Calculated MW	49313

Additional Information

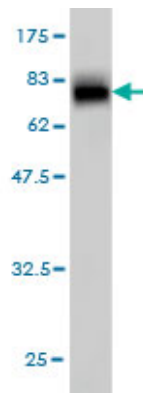
Gene ID	55846
Other Names	Integrin-alpha FG-GAP repeat-containing protein 2, ITFG2
Target/Specificity	MDS028 (AAH06552, 1 a.a. ~ 447 a.a) full-length recombinant protein with GST tag. MW of the GST tag alone is 26 KDa.
Dilution	WB~~1:500~1000 IF~~1:50~200 E~~N/A
Format	Clear, colorless solution in phosphate buffered saline, pH 7.2 .
Storage	Store at -20°C or lower. Aliquot to avoid repeated freezing and thawing.
Precautions	MDS028 Antibody (monoclonal) (M06) is for research use only and not for use in diagnostic or therapeutic procedures.

References

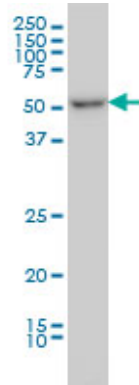
Large-scale mapping of human protein-protein interactions by mass spectrometry. Ewing RM, et al. Mol Syst Biol, 2007. PMID 17353931. A human protein-protein interaction network: a resource for annotating the proteome. Stelzl U, et al. Cell, 2005 Sep 23. PMID 16169070. Generation and initial analysis of more than 15,000 full-length human and mouse cDNA sequences. Strausberg RL, et al. Proc Natl Acad Sci U S A, 2002 Dec 24. PMID 12477932.

Images

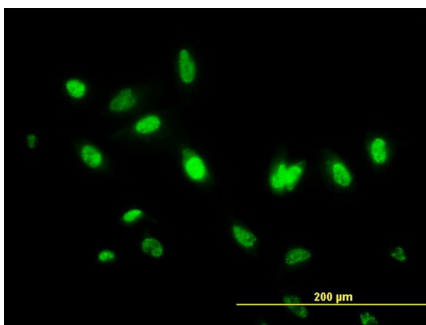
Antibody Reactive Against Recombinant Protein. Western



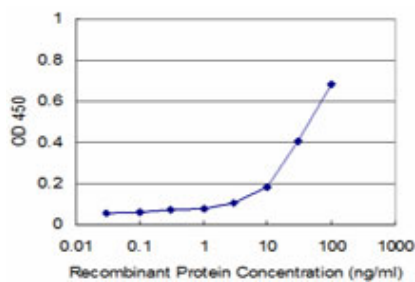
Blot detection against Immunogen (74.69 KDa) .



MDS028 monoclonal antibody (M06), clone 3D7 Western Blot analysis of MDS028 expression in HeLa S3 NE ((Cat # AT2828a)



Immunofluorescence of monoclonal antibody to MDS028 on HeLa cell. [antibody concentration 10 ug/ml]



Detection limit for recombinant GST tagged MDS028 is approximately 3ng/ml as a capture antibody.

Please note: All products are 'FOR RESEARCH USE ONLY. NOT FOR USE IN DIAGNOSTIC OR THERAPEUTIC PROCEDURES'.