

MEF2D Antibody (monoclonal) (M02)

Mouse monoclonal antibody raised against a partial recombinant MEF2D.

Catalog # AT2838a

Product Information

Application	WB, IF
Primary Accession	Q14814
Other Accession	NM_005920
Reactivity	Human
Host	mouse
Clonality	monoclonal
Isotype	IgG2a Kappa
Clone Names	3A11
Calculated MW	55938

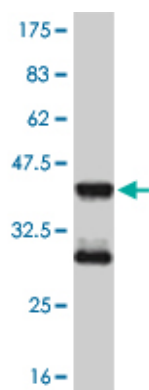
Additional Information

Gene ID	4209
Other Names	Myocyte-specific enhancer factor 2D, MEF2D
Target/Specificity	MEF2D (NP_005911.1, 256 a.a. ~ 351 a.a) partial recombinant protein with GST tag. MW of the GST tag alone is 26 KDa.
Dilution	WB~~1:500~1000 IF~~1:50~200
Format	Clear, colorless solution in phosphate buffered saline, pH 7.2 .
Storage	Store at -20°C or lower. Aliquot to avoid repeated freezing and thawing.
Precautions	MEF2D Antibody (monoclonal) (M02) is for research use only and not for use in diagnostic or therapeutic procedures.

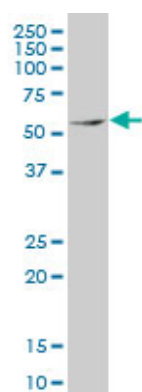
References

COMMON VARIANTS IN 40 GENES ASSESSED FOR DIABETES INCIDENCE AND RESPONSE TO METFORMIN AND LIFESTYLE INTERVENTIONS IN THE DIABETES PREVENTION PROGRAM. Jablonski KA, et al. Diabetes, 2010 Aug 3. PMID 20682687.Variation at the NFATC2 Locus Increases the Risk of Thiazolinedione-Induced Edema in the Diabetes REduction Assessment with ramipril and rosiglitazone Medication (DREAM) Study. Bailey SD, et al. Diabetes Care, 2010 Jul 13. PMID 20628086.Dual roles for MEF2A and MEF2D during human macrophage terminal differentiation and c-Jun expression. Aude-Garcia C, et al. Biochem J, 2010 Sep 1. PMID 20590529.Regulation of cardiomyocyte Glut4 expression by ZAC1. Czubryt MP, et al. J Biol Chem, 2010 May 28. PMID 20363751.Association of genetic variants with hemorrhagic stroke in Japanese individuals. Yoshida T, et al. Int J Mol Med, 2010 Apr. PMID 20198315.

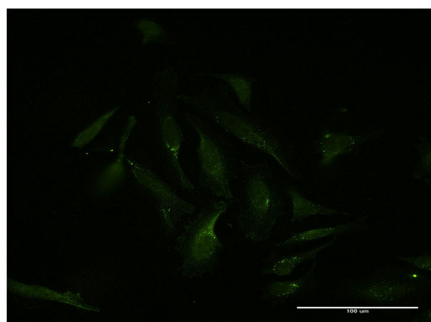
Images



Antibody Reactive Against Recombinant Protein. Western Blot detection against Immunogen (36.56 KDa) .



MEF2D monoclonal antibody (M02), clone 3A11 Western Blot analysis of MEF2D expression in K-562 ((Cat # AT2838a)



Immunofluorescence of monoclonal antibody to MEF2D on HeLa cell . [antibody concentration 10 ug/ml]

Please note: All products are 'FOR RESEARCH USE ONLY. NOT FOR USE IN DIAGNOSTIC OR THERAPEUTIC PROCEDURES'.