

# MFGE8 Antibody (monoclonal) (M09)

Mouse monoclonal antibody raised against a partial recombinant MFGE8.

Catalog # AT2849a

## Product Information

---

<b>Application</b>	WB, E
<b>Primary Accession</b>	<a href="#">Q08431</a>
<b>Other Accession</b>	<a href="#">NM_005928</a>
<b>Reactivity</b>	Human
<b>Host</b>	Mouse
<b>Clonality</b>	monoclonal
<b>Isotype</b>	IgG2a Kappa
<b>Clone Names</b>	3E10
<b>Calculated MW</b>	43105

## Additional Information

---

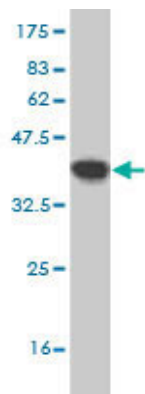
<b>Gene ID</b>	4240
<b>Other Names</b>	Lactadherin, Breast epithelial antigen BA46, HMFG, MFGM, Milk fat globule-EGF factor 8, MFG-E8, SED1, Lactadherin short form, Medin, MFGE8
<b>Target/Specificity</b>	MFGE8 (NP_005919, 61 a.a. ~ 170 a.a) partial recombinant protein with GST tag. MW of the GST tag alone is 26 KDa.
<b>Dilution</b>	WB~~1:500~1000 E~~N/A
<b>Format</b>	Clear, colorless solution in phosphate buffered saline, pH 7.2 .
<b>Storage</b>	Store at -20°C or lower. Aliquot to avoid repeated freezing and thawing.
<b>Precautions</b>	MFGE8 Antibody (monoclonal) (M09) is for research use only and not for use in diagnostic or therapeutic procedures.

## References

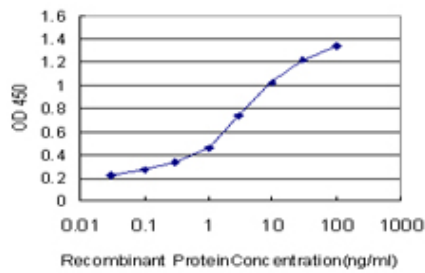
---

Aberrant splicing of the milk fat globule-EGF factor 8 (MFG-E8) gene in human systemic lupus erythematosus. Yamaguchi H, et al. Eur J Immunol, 2010 Jun. PMID 20213738.Sequential use of transcriptional profiling, expression quantitative trait mapping, and gene association implicates MMP20 in human kidney aging. Wheeler HE, et al. PLoS Genet, 2009 Oct. PMID 19834535.Genetic polymorphism in milk fat globule-EGF factor 8 (MFG-E8) is associated with systemic lupus erythematosus in human. Hu CY, et al. Lupus, 2009 Jul. PMID 19502262.Milk fat globule protein epidermal growth factor-8: a pivotal relay element within the angiotensin II and monocyte chemoattractant protein-1 signaling cascade mediating vascular smooth muscle cells invasion. Fu Z, et al. Circ Res, 2009 Jun 19. PMID 19443842.SED1/MFG-E8: a bi-motif protein that orchestrates diverse cellular interactions. Raymond A, et al. J Cell Biochem, 2009 Apr

Images



Antibody Reactive Against Recombinant Protein.Western Blot detection against Immunogen (37.84 KDa) .



Detection limit for recombinant GST tagged MFGE8 is approximately 0.3ng/ml as a capture antibody.

Please note: All products are 'FOR RESEARCH USE ONLY. NOT FOR USE IN DIAGNOSTIC OR THERAPEUTIC PROCEDURES'.