

MIF Antibody (monoclonal) (M01)

Mouse monoclonal antibody raised against a full length recombinant MIF.

Catalog # AT2870a

Product Information

Application	WB, IHC, IP, E
Primary Accession	P14174
Other Accession	BC000447
Reactivity	Human
Host	mouse
Clonality	monoclonal
Isotype	IgG1 Kappa
Clone Names	2A10-4D3
Calculated MW	12476

Additional Information

Gene ID	4282
Other Names	Macrophage migration inhibitory factor, MIF, Glycosylation-inhibiting factor, GIF, L-dopachrome isomerase, L-dopachrome tautomerase, Phenylpyruvate tautomerase, MIF, GLIF, MMIF
Target/Specificity	MIF (AAH00447.1, 1 a.a. ~ 115 a.a) full-length recombinant protein with GST tag. MW of the GST tag alone is 26 KDa.
Dilution	WB~~1:500~1000 IHC~~1.5ug/ml IP~~N/A E~~1ug/ml~3ng/ml
Format	Clear, colorless solution in phosphate buffered saline, pH 7.2 .
Storage	Store at -20°C or lower. Aliquot to avoid repeated freezing and thawing.
Precautions	MIF Antibody (monoclonal) (M01) is for research use only and not for use in diagnostic or therapeutic procedures.

Background

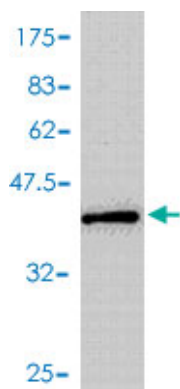
This gene encodes a lymphokine involved in cell-mediated immunity, immunoregulation, and inflammation. It plays a role in the regulation of macrophage function in host defense through the suppression of anti-inflammatory effects of glucocorticoids. This lymphokine and the JAB1 protein form a complex in the cytosol near the peripheral plasma membrane, which may indicate an additional role in integrin signaling pathways.

References

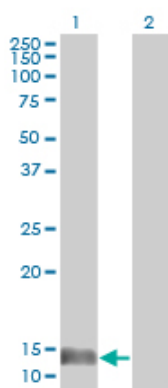
1. An HLA-Presented Fragment of Macrophage Migration Inhibitory Factor Is a Therapeutic Target for Invasive Breast Cancer. Hawkins O, Verma B, Lightfoot S, Jain R, Rawat A, McNair S, Caseltine S, Mojsilovic A, Gupta P, Neethling F, Almanza O, Dooley W, Hildebrand W, Weidanz J. *J Immunol*. 2011 Apr 22. [Epub ahead of print]

2. eIF3m expression influences the regulation of tumorigenesis-related genes in human colon cancer. Goh SH, Hong SH, Hong SH, Lee BC, Ju MH, Jeong JS, Cho YR, Kim IH, Lee YS. *Oncogene*. 2010 Sep 13. [Epub ahead of print]

Images



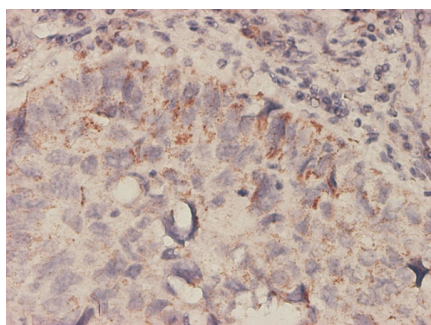
Antibody Reactive Against Recombinant Protein. Western Blot detection against Immunogen (38.39 KDa) .



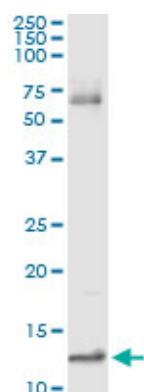
Western Blot analysis of MIF expression in transfected 293T cell line by MIF monoclonal antibody (M01), clone 2A10-4D3.

Lane 1: MIF transfected lysate (12.5 KDa).

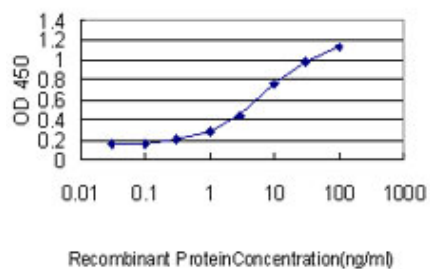
Lane 2: Non-transfected lysate.



Immunoperoxidase of monoclonal antibody to MIF on formalin-fixed paraffin-embedded human lung, adenosquamous cell carcinoma tissue. [antibody concentration 1 ~ 10 ug/ml]



Immunoprecipitation of MIF transfected lysate using anti-MIF monoclonal antibody and Protein A Magnetic Bead ([U0007](#)), and immunoblotted with MIF MaxPab rabbit polyclonal antibody.



Detection limit for recombinant GST tagged MIF is approximately 0.1ng/ml as a capture antibody.

Please note: All products are 'FOR RESEARCH USE ONLY. NOT FOR USE IN DIAGNOSTIC OR THERAPEUTIC PROCEDURES'.