

# MLC1SA Antibody (monoclonal) (M01)

Mouse monoclonal antibody raised against a partial recombinant MLC1SA.

Catalog # AT2877a

## Product Information

---

<b>Application</b>	WB, E
<b>Primary Accession</b>	<a href="#">P14649</a>
<b>Other Accession</b>	<a href="#">NM_002475</a>
<b>Reactivity</b>	Human
<b>Host</b>	mouse
<b>Clonality</b>	monoclonal
<b>Isotype</b>	IgG2b Kappa
<b>Clone Names</b>	4G11
<b>Calculated MW</b>	22764

## Additional Information

---

<b>Gene ID</b>	140465
<b>Other Names</b>	Myosin light chain 6B, Myosin light chain 1 slow-twitch muscle A isoform, MLC1sa, Smooth muscle and nonmuscle myosin light chain alkali 6B, MYL6B, MLC1SA
<b>Target/Specificity</b>	MLC1SA (NP_002466, 109 a.a. ~ 208 a.a) partial recombinant protein with GST tag. MW of the GST tag alone is 26 KDa.
<b>Dilution</b>	WB~~1:500~1000 E~~N/A
<b>Format</b>	Clear, colorless solution in phosphate buffered saline, pH 7.2 .
<b>Storage</b>	Store at -20°C or lower. Aliquot to avoid repeated freezing and thawing.
<b>Precautions</b>	MLC1SA Antibody (monoclonal) (M01) is for research use only and not for use in diagnostic or therapeutic procedures.

## Background

---

Myosin is a hexameric ATPase cellular motor protein. It is composed of two heavy chains, two nonphosphorylatable alkali light chains, and two phosphorylatable regulatory light chains. This gene encodes a myosin alkali light chain expressed in both slow-twitch skeletal muscle and in nonmuscle tissue.

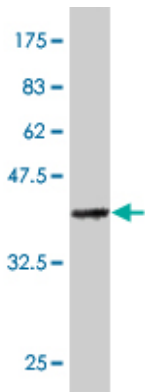
## References

---

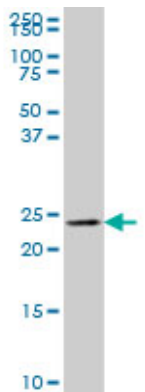
IQ motif selectivity in human IQGAP1: binding of myosin essential light chain and S100B. Pathmanathan S, et al. Mol Cell Biochem, 2008 Nov. PMID 18587628. Three myosin V structures delineate essential features of

chemo-mechanical transduction. Coureux PD, et al. EMBO J, 2004 Nov 24. PMID 15510214.The status, quality, and expansion of the NIH full-length cDNA project: the Mammalian Gene Collection (MGC). Gerhard DS, et al. Genome Res, 2004 Oct. PMID 15489334.Smooth muscle contraction and relaxation. Webb RC. Adv Physiol Educ, 2003 Dec. PMID 14627618.Generation and initial analysis of more than 15,000 full-length human and mouse cDNA sequences. Strausberg RL, et al. Proc Natl Acad Sci U S A, 2002 Dec 24. PMID 12477932.

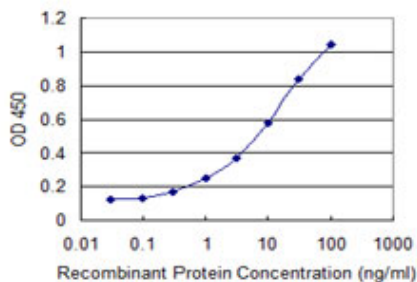
Images



Antibody Reactive Against Recombinant Protein.Western Blot detection against Immunogen (36.74 KDa) .



MLC1SA monoclonal antibody (M01), clone 4G11 Western Blot analysis of MLC1SA expression in K-562 ( (Cat # AT2877a )



Detection limit for recombinant GST tagged MYL6B is 0.1 ng/ml as a capture antibody.

Please note: All products are 'FOR RESEARCH USE ONLY. NOT FOR USE IN DIAGNOSTIC OR THERAPEUTIC PROCEDURES'.