

MLF2 Antibody (monoclonal) (M01)

Mouse monoclonal antibody raised against a full length recombinant MLF2.

Catalog # AT2878a

Product Information

Application	WB, IHC, E
Primary Accession	Q15773
Other Accession	BC000898
Reactivity	Human
Host	mouse
Clonality	monoclonal
Isotype	IgG1 Kappa
Clone Names	2F6-1E3
Calculated MW	28147

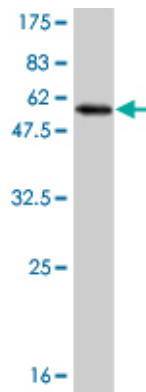
Additional Information

Gene ID	8079
Other Names	Myeloid leukemia factor 2, Myelodysplasia-myeloid leukemia factor 2, MLF2
Target/Specificity	MLF2 (AAH00898, 1 a.a. ~ 248 a.a) full-length recombinant protein with GST tag. MW of the GST tag alone is 26 KDa.
Dilution	WB~~1:500~1000 IHC~~1:100~500 E~~N/A
Format	Clear, colorless solution in phosphate buffered saline, pH 7.2 .
Storage	Store at -20°C or lower. Aliquot to avoid repeated freezing and thawing.
Precautions	MLF2 Antibody (monoclonal) (M01) is for research use only and not for use in diagnostic or therapeutic procedures.

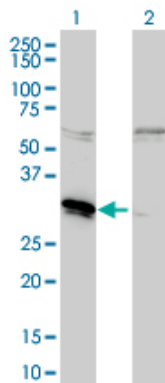
References

Use of expression data and the CGEMS genome-wide breast cancer association study to identify genes that may modify risk in BRCA1/2 mutation carriers. Walker LC, et al. Breast Cancer Res Treat, 2008 Nov. PMID 18095154. Toward a confocal subcellular atlas of the human proteome. Barbe L, et al. Mol Cell Proteomics, 2008 Mar. PMID 18029348. Large-scale mapping of human protein-protein interactions by mass spectrometry. Ewing RM, et al. Mol Syst Biol, 2007. PMID 17353931. Phosphoproteome analysis of the human mitotic spindle. Nousiainen M, et al. Proc Natl Acad Sci U S A, 2006 Apr 4. PMID 16565220. The status, quality, and expansion of the NIH full-length cDNA project: the Mammalian Gene Collection (MGC). Gerhard DS, et al. Genome Res, 2004 Oct. PMID 15489334.

Images

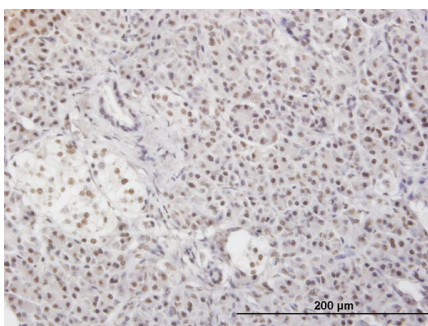


Antibody Reactive Against Recombinant Protein. Western Blot detection against Immunogen (53.02 KDa) .

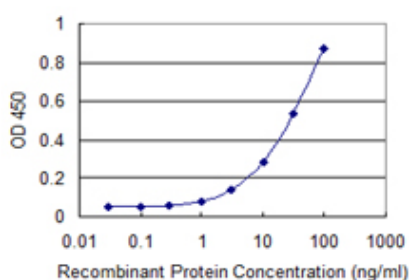


Western Blot analysis of MLF2 expression in transfected 293T cell line by MLF2 monoclonal antibody (M01), clone 2F6-1E3.

Lane 1: MLF2 transfected lysate(27.28 KDa).
Lane 2: Non-transfected lysate.



Immunoperoxidase of monoclonal antibody to MLF2 on formalin-fixed paraffin-embedded human pancreas. [antibody concentration 3 ug/ml]



Detection limit for recombinant GST tagged MLF2 is 0.3 ng/ml as a capture antibody.

Citations

- [Targeting RPL39 and MLF2 reduces tumor initiation and metastasis in breast cancer by inhibiting nitric oxide synthase signaling.](#)

Please note: All products are 'FOR RESEARCH USE ONLY. NOT FOR USE IN DIAGNOSTIC OR THERAPEUTIC PROCEDURES'.