

MPG Antibody (monoclonal) (M08)

Mouse monoclonal antibody raised against a partial recombinant MPG.

Catalog # AT2889a

Product Information

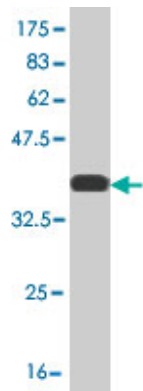
Application	WB, IF, E
Primary Accession	P29372
Other Accession	BC014991
Reactivity	Human
Host	mouse
Clonality	monoclonal
Isotype	IgG2a Kappa
Clone Names	4B12
Calculated MW	32869

Additional Information

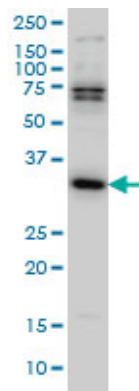
Gene ID	4350
Other Names	DNA-3-methyladenine glycosylase, 3-alkyladenine DNA glycosylase, 3-methyladenine DNA glycosidase, ADPG, N-methylpurine-DNA glycosylase, MPG, AAG, ANPG, MID1
Target/Specificity	MPG (AAH14991, 1 a.a. ~ 90 a.a) partial recombinant protein with GST tag. MW of the GST tag alone is 26 KDa.
Dilution	WB~~1:500~1000 IF~~1:50~200 E~~N/A
Format	Clear, colorless solution in phosphate buffered saline, pH 7.2 .
Storage	Store at -20°C or lower. Aliquot to avoid repeated freezing and thawing.
Precautions	MPG Antibody (monoclonal) (M08) is for research use only and not for use in diagnostic or therapeutic procedures.

References

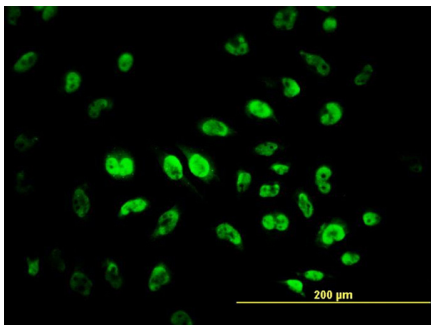
Polymorphisms in the base excision repair pathway and graft-versus-host disease. Arora M, et al. Leukemia, 2010 Aug. PMID 20574454. Variation within DNA repair pathway genes and risk of multiple sclerosis. Briggs FB, et al. Am J Epidemiol, 2010 Jul 15. PMID 20522537. Frameshift mutagenesis and microsatellite instability induced by human alkyladenine DNA glycosylase. Klapacz J, et al. Mol Cell, 2010 Mar 26. PMID 20347426. Association between genetic variants in the base excision repair pathway and outcomes after hematopoietic cell transplantations. Thyagarajan B, et al. Biol Blood Marrow Transplant, 2010 Aug. PMID 20226869. Hopping enables a DNA repair glycosylase to search both strands and bypass a bound protein. Hedglin M, et al. ACS Chem Biol, 2010 Apr 16. PMID 20201599.



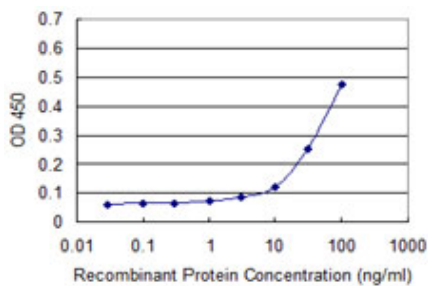
Antibody Reactive Against Recombinant Protein.Western Blot detection against Immunogen (35.53 KDa) .



MPG monoclonal antibody (M08), clone 4B12 Western Blot analysis of MPG expression in HeLa S3 NE ((Cat # AT2889a)



Immunofluorescence of monoclonal antibody to MPG on HeLa cell. [antibody concentration 10 ug/ml]



Detection limit for recombinant GST tagged MPG is approximately 10ng/ml as a capture antibody.

Please note: All products are 'FOR RESEARCH USE ONLY. NOT FOR USE IN DIAGNOSTIC OR THERAPEUTIC PROCEDURES'.