

MPHOSPH6 Antibody (monoclonal) (M01)

Mouse monoclonal antibody raised against a full length recombinant MPHOSPH6.

Catalog # AT2892a

Product Information

Application	WB, E
Primary Accession	Q99547
Other Accession	BC005242
Reactivity	Human
Host	mouse
Clonality	monoclonal
Isotype	IgG1 kappa
Clone Names	1D8-2A8
Calculated MW	19024

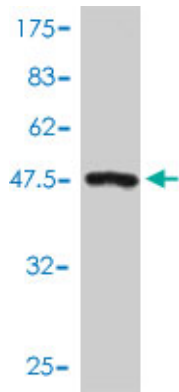
Additional Information

Gene ID	10200
Other Names	M-phase phosphoprotein 6, MPHOSPH6, MPP6
Target/Specificity	MPHOSPH6 (AAH05242, 1 a.a. ~ 160 a.a) full-length recombinant protein with GST tag. MW of the GST tag alone is 26 KDa.
Dilution	WB~~1:500~1000 E~~N/A
Format	Clear, colorless solution in phosphate buffered saline, pH 7.2 .
Storage	Store at -20°C or lower. Aliquot to avoid repeated freezing and thawing.
Precautions	MPHOSPH6 Antibody (monoclonal) (M01) is for research use only and not for use in diagnostic or therapeutic procedures.

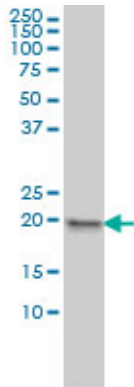
References

Personalized smoking cessation: interactions between nicotine dose, dependence and quit-success genotype score. Rose JE, et al. Mol Med, 2010 Jul-Aug. PMID 20379614. A genome-wide study of common SNPs and CNVs in cognitive performance in the CANTAB. Need AC, et al. Hum Mol Genet, 2009 Dec 1. PMID 19734545. Genome-wide scan identifies CDH13 as a novel susceptibility locus contributing to blood pressure determination in two European populations. Org E, et al. Hum Mol Genet, 2009 Jun 15. PMID 19304780. Genome-wide association with bone mass and geometry in the Framingham Heart Study. Kiel DP, et al. BMC Med Genet, 2007 Sep 19. PMID 17903296. Global, in vivo, and site-specific phosphorylation dynamics in signaling networks. Olsen JV, et al. Cell, 2006 Nov 3. PMID 17081983.

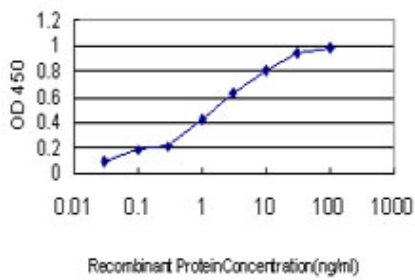
Images



Antibody Reactive Against Recombinant Protein. Western Blot detection against Immunogen (43.34 KDa) .



MPHOSPH6 monoclonal antibody (M01), clone 1D8-2A8
Western Blot analysis of MPHOSPH6 expression in HeLa (Cat # AT2892a)



Detection limit for recombinant GST tagged MPHOSPH6 is approximately 0.1 ng/ml as a capture antibody.

Please note: All products are 'FOR RESEARCH USE ONLY. NOT FOR USE IN DIAGNOSTIC OR THERAPEUTIC PROCEDURES'.