

MPPED2 Antibody (monoclonal) (M01A)

Mouse monoclonal antibody raised against a full length recombinant MPPED2.

Catalog # AT2896a

Product Information

Application	WB
Primary Accession	Q15777
Other Accession	BC031582
Reactivity	Human
Host	mouse
Clonality	monoclonal
Isotype	IgM kappa
Clone Names	2G1-1B7
Calculated MW	33360

Additional Information

Gene ID	744
Other Names	Metallophosphoesterase MPPED2, 31--, Fetal brain protein 239, 239FB, Metallophosphoesterase domain-containing protein 2, MPPED2, C11orf8, FAM1B
Target/Specificity	MPPED2 (AAH31582, 1 a.a. ~ 294 a.a) full-length recombinant protein with GST tag. MW of the GST tag alone is 26 KDa.
Dilution	WB~~1:500~1000
Format	Clear, colorless solution in phosphate buffered saline, pH 7.2 .
Storage	Store at -20°C or lower. Aliquot to avoid repeated freezing and thawing.
Precautions	MPPED2 Antibody (monoclonal) (M01A) is for research use only and not for use in diagnostic or therapeutic procedures.

Background

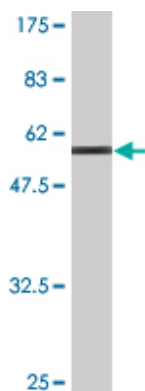
This gene likely encodes a metallophosphoesterase. The encoded protein may play a role a brain development. Alternatively spliced transcript variants have been described.

References

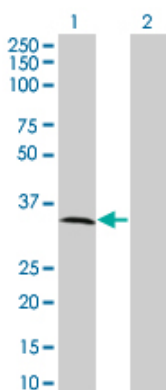
Personalized smoking cessation: interactions between nicotine dose, dependence and quit-success genotype score. Rose JE, et al. Mol Med, 2010 Jul-Aug. PMID 20379614.Coeliac disease-associated risk variants in TNFAIP3 and REL implicate altered NF-kappaB signalling. Trynka G, et al. Gut, 2009 Aug. PMID

19240061.Diversification of transcriptional modulation: large-scale identification and characterization of putative alternative promoters of human genes. Kimura K, et al. Genome Res, 2006 Jan. PMID 16344560.The status, quality, and expansion of the NIH full-length cDNA project: the Mammalian Gene Collection (MGC). Gerhard DS, et al. Genome Res, 2004 Oct. PMID 15489334.Generation and initial analysis of more than 15,000 full-length human and mouse cDNA sequences. Strausberg RL, et al. Proc Natl Acad Sci U S A, 2002 Dec 24. PMID 12477932.

Images



Antibody Reactive Against Recombinant Protein. Western Blot detection against Immunogen (58.08 KDa) .



Western Blot analysis of MPPED2 expression in transfected 293T cell line by C11orf8 monoclonal antibody (M01A), clone 2G1-1B7.

Lane 1: MPPED2 transfected lysate(33.81 KDa).

Lane 2: Non-transfected lysate.

Please note: All products are 'FOR RESEARCH USE ONLY. NOT FOR USE IN DIAGNOSTIC OR THERAPEUTIC PROCEDURES'.