

MRPS27 Antibody (monoclonal) (M06)

Mouse monoclonal antibody raised against a full length recombinant MRPS27.

Catalog # AT2904a

Product Information

Application	E
Primary Accession	Q92552
Other Accession	BC030521
Reactivity	Human
Host	mouse
Clonality	monoclonal
Isotype	IgG2a Kappa
Clone Names	1G3
Calculated MW	47611

Additional Information

Gene ID	23107
Other Names	28S ribosomal protein S27, mitochondrial, MRP-S27, S27mt, MRPS27, KIAA0264
Target/Specificity	MRPS27 (AAH30521, 51 a.a. ~ 168 a.a) full-length recombinant protein with GST tag. MW of the GST tag alone is 26 KDa.
Dilution	E~~N/A
Format	Clear, colorless solution in phosphate buffered saline, pH 7.2 .
Storage	Store at -20°C or lower. Aliquot to avoid repeated freezing and thawing.
Precautions	MRPS27 Antibody (monoclonal) (M06) is for research use only and not for use in diagnostic or therapeutic procedures.

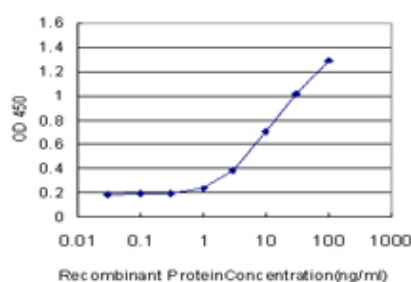
Background

Mammalian mitochondrial ribosomal proteins are encoded by nuclear genes and help in protein synthesis within the mitochondrion. Mitochondrial ribosomes (mitoribosomes) consist of a small 28S subunit and a large 39S subunit. They have an estimated 75% protein to rRNA composition compared to prokaryotic ribosomes, where this ratio is reversed. Another difference between mammalian mitoribosomes and prokaryotic ribosomes is that the latter contain a 5S rRNA. Among different species, the proteins comprising the mitoribosome differ greatly in sequence, and sometimes in biochemical properties, which prevents easy recognition by sequence homology. This gene encodes a 28S subunit protein that may be a functional partner of the death associated protein 3 (DAP3).

References

Systematic analysis of the protein interaction network for the human transcription machinery reveals the identity of the 7SK capping enzyme. Jeronimo C, et al. *Mol Cell*, 2007 Jul 20. PMID 17643375. Identification and characterization of over 100 mitochondrial ribosomal protein pseudogenes in the human genome. Zhang Z, et al. *Genomics*, 2003 May. PMID 12706105. Generation and initial analysis of more than 15,000 full-length human and mouse cDNA sequences. Strausberg RL, et al. *Proc Natl Acad Sci U S A*, 2002 Dec 24. PMID 12477932. Identification of four proteins from the small subunit of the mammalian mitochondrial ribosome using a proteomics approach. Koc EC, et al. *Protein Sci*, 2001 Mar. PMID 11344316. The small subunit of the mammalian mitochondrial ribosome. Identification of the full complement of ribosomal proteins present. Cavdar Koc E, et al. *J Biol Chem*, 2001 Jun 1. PMID 11279123.

Images



Detection limit for recombinant GST tagged MRPS27 is approximately 1 ng/ml as a capture antibody.

Please note: All products are 'FOR RESEARCH USE ONLY. NOT FOR USE IN DIAGNOSTIC OR THERAPEUTIC PROCEDURES'.