

MSI1 Antibody (monoclonal) (M04)

Mouse monoclonal antibody raised against a full length recombinant MSI1.

Catalog # AT2913a

Product Information

Application	WB, IHC, IF, E
Primary Accession	O43347
Other Accession	NM_002442
Reactivity	Human
Host	mouse
Clonality	monoclonal
Isotype	IgG2a Kappa
Clone Names	3F2
Calculated MW	39125

Additional Information

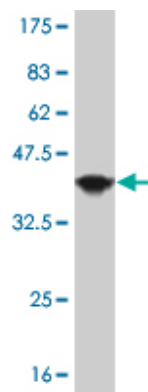
Gene ID	4440
Other Names	RNA-binding protein Musashi homolog 1, Musashi-1, MSI1
Target/Specificity	MSI1 (NP_002433, 1 a.a. ~ 87 a.a) full length recombinant protein with GST tag. MW of the GST tag alone is 26 KDa.
Dilution	WB~~1:500~1000 IHC~~1:100~500 IF~~1:50~200 E~~N/A
Format	Clear, colorless solution in phosphate buffered saline, pH 7.2 .
Storage	Store at -20°C or lower. Aliquot to avoid repeated freezing and thawing.
Precautions	MSI1 Antibody (monoclonal) (M04) is for research use only and not for use in diagnostic or therapeutic procedures.

Background

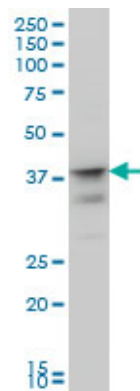
This gene encodes a protein containing two conserved tandem RNA recognition motifs. Similar proteins in other species function as RNA-binding proteins and play central roles in posttranscriptional gene regulation. Expression of this gene has been correlated with the grade of the malignancy and proliferative activity in gliomas and melanomas. A pseudogene for this gene is located on chromosome 11q13.

References

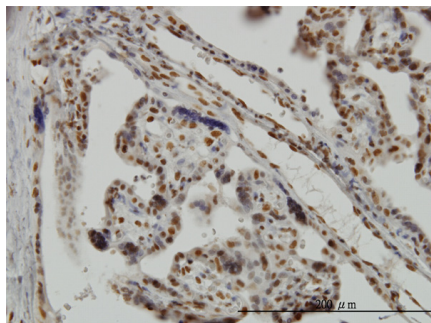
1. Drug-resistant colon cancer cells produce high carcinoembryonic antigen and might not be cancer-initiating cells. Lee HC, Ling QD, Yu WC, Hung CM, Kao TC, Huang YW, Higuchi A. *Drug Des Devel Ther*. 2013 Jun 17;7:491-502. doi: 10.2147/DDDT.S45890. Print 2013.



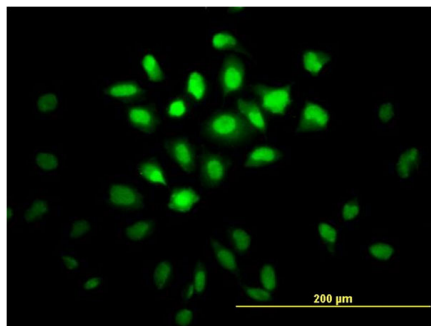
Antibody Reactive Against Recombinant Protein.Western Blot detection against Immunogen (35.57 KDa) .



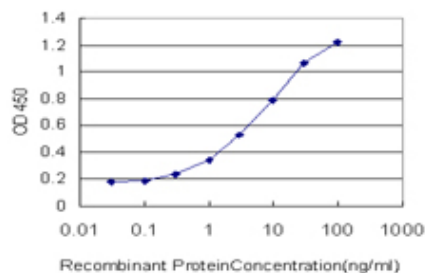
MSI1 monoclonal antibody (M04), clone 3F2 Western Blot analysis of MSI1 expression in IMR-32 ((Cat # AT2913a)



Immunoperoxidase of monoclonal antibody to MSI1 on formalin-fixed paraffin-embedded human placenta. [antibody concentration 3 ug/ml]



Immunofluorescence of monoclonal antibody to MSI1 on HeLa cell. [antibody concentration 10 ug/ml]



Detection limit for recombinant GST tagged MSI1 is approximately 0.3ng/ml as a capture antibody.

Please note: All products are 'FOR RESEARCH USE ONLY. NOT FOR USE IN DIAGNOSTIC OR THERAPEUTIC PROCEDURES'.