

MSI1 Antibody (monoclonal) (M05)

Mouse monoclonal antibody raised against a full length recombinant MSI1.

Catalog # AT2914a

Product Information

Application	WB, IHC, IF, E
Primary Accession	O43347
Other Accession	NM_002442
Reactivity	Human
Host	mouse
Clonality	monoclonal
Isotype	IgG2b Kappa
Clone Names	1B11
Calculated MW	39125

Additional Information

Gene ID	4440
Other Names	RNA-binding protein Musashi homolog 1, Musashi-1, MSI1
Target/Specificity	MSI1 (NP_002433, 1 a.a. ~ 87 a.a) full length recombinant protein with GST tag. MW of the GST tag alone is 26 KDa.
Dilution	WB~~1:500~1000 IHC~~1:100~500 IF~~1:50~200 E~~N/A
Format	Clear, colorless solution in phosphate buffered saline, pH 7.2 .
Storage	Store at -20°C or lower. Aliquot to avoid repeated freezing and thawing.
Precautions	MSI1 Antibody (monoclonal) (M05) is for research use only and not for use in diagnostic or therapeutic procedures.

Background

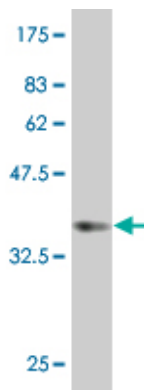
This gene encodes a protein containing two conserved tandem RNA recognition motifs. Similar proteins in other species function as RNA-binding proteins and play central roles in posttranscriptional gene regulation. Expression of this gene has been correlated with the grade of the malignancy and proliferative activity in gliomas and melanomas. A pseudogene for this gene is located on chromosome 11q13.

References

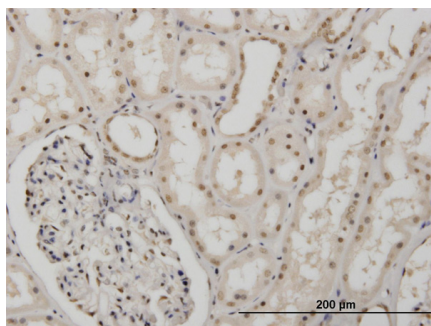
Expression of putative stem cell genes Musashi-1 and beta1-integrin in human colorectal adenomas and adenocarcinomas. Fan LF, et al. Int J Colorectal Dis, 2010 Jan. PMID 19714342. Genomic analyses of musashi1 downstream targets show a strong association with cancer-related processes. de Sousa Abreu R, et al. J Biol

Chem, 2009 May 1. PMID 19258308. Musashi-1 suppresses expression of Paneth cell-specific genes in human intestinal epithelial cells. Murayama M, et al. J Gastroenterol, 2009. PMID 19214660. Musashi1 modulates cell proliferation genes in the medulloblastoma cell line Daoy. Sanchez-Diaz PC, et al. BMC Cancer, 2008 Sep 30. PMID 18826648. Increased expression of the adult stem cell marker Musashi-1 in endometriosis and endometrial carcinoma. G?tte M, et al. J Pathol, 2008 Jul. PMID 18473332.

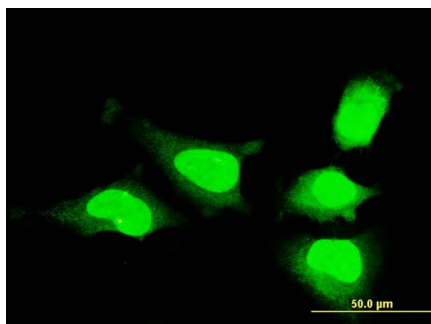
Images



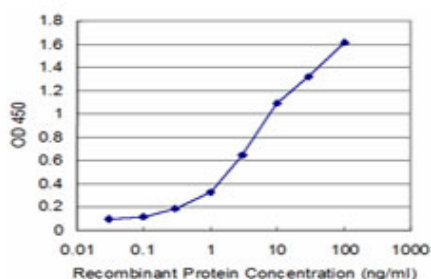
Antibody Reactive Against Recombinant Protein. Western Blot detection against Immunogen (35.57 kDa) .



Immunoperoxidase of monoclonal antibody to MSI1 on formalin-fixed paraffin-embedded human kidney. [antibody concentration 3 ug/ml]



Immunofluorescence of monoclonal antibody to MSI1 on HeLa cell . [antibody concentration 10 ug/ml]



Detection limit for recombinant GST tagged MSI1 is approximately 0.3ng/ml as a capture antibody.

Please note: All products are 'FOR RESEARCH USE ONLY. NOT FOR USE IN DIAGNOSTIC OR THERAPEUTIC PROCEDURES'.