

MSRB2 Antibody (monoclonal) (M01)

Mouse monoclonal antibody raised against a partial recombinant MSRB2.

Catalog # AT2920a

Product Information

Application	WB, E
Primary Accession	Q9Y3D2
Other Accession	NM_012228
Reactivity	Human
Host	mouse
Clonality	monoclonal
Isotype	IgG1 Kappa
Clone Names	2B7
Calculated MW	19536

Additional Information

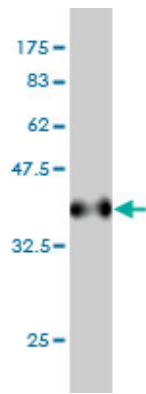
Gene ID	22921
Other Names	Methionine-R-sulfoxide reductase B2, mitochondrial, MsrB2, 184-, MSRB2, CBS-1, MSRB
Target/Specificity	MSRB2 (NP_036360, 102 a.a. ~ 201 a.a) partial recombinant protein with GST tag. MW of the GST tag alone is 26 KDa.
Dilution	WB~~1:500~1000 E~~N/A
Format	Clear, colorless solution in phosphate buffered saline, pH 7.2 .
Storage	Store at -20°C or lower. Aliquot to avoid repeated freezing and thawing.
Precautions	MSRB2 Antibody (monoclonal) (M01) is for research use only and not for use in diagnostic or therapeutic procedures.

References

1.Methionine sulfoxide reductase B2 is highly expressed in the retina and protects retinal pigmented epithelium cells from oxidative damage.Pascual I, Larrayoz IM, Campos MM, Rodriguez IR.Exp Eye Res. 2009 Dec 22. [Epub ahead of print]

Images

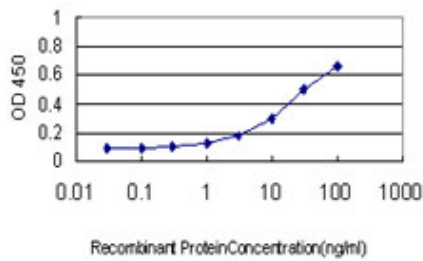
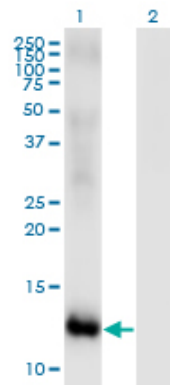
Antibody Reactive Against Recombinant Protein.Western Blot detection against Immunogen (36.74 KDa) .



Western Blot analysis of MSRB2 expression in transfected 293T cell line by MSRB2 monoclonal antibody (M01), clone 2B7.

Lane 1: MSRB2 transfected lysate (Predicted MW: 11.11 KDa).

Lane 2: Non-transfected lysate.



Detection limit for recombinant GST tagged MSRB2 is approximately 0.3ng/ml as a capture antibody.

Please note: All products are 'FOR RESEARCH USE ONLY. NOT FOR USE IN DIAGNOSTIC OR THERAPEUTIC PROCEDURES'.