

# MTAP Antibody (monoclonal) (M01)

Mouse monoclonal antibody raised against a full length recombinant MTAP.

Catalog # AT2924a

## Product Information

<b>Application</b>	WB, IF, E
<b>Primary Accession</b>	<a href="#">Q13126</a>
<b>Other Accession</b>	<a href="#">BC018625</a>
<b>Reactivity</b>	Human, Mouse, Rat
<b>Host</b>	mouse
<b>Clonality</b>	monoclonal
<b>Isotype</b>	IgG1 Kappa
<b>Clone Names</b>	2G4
<b>Calculated MW</b>	31236

## Additional Information

<b>Gene ID</b>	4507
<b>Other Names</b>	S-methyl-5'-thioadenosine phosphorylase {ECO:0000255 HAMAP-Rule:MF_03155}, 24228 {ECO:0000255 HAMAP-Rule:MF_03155}, 5'-methylthioadenosine phosphorylase {ECO:0000255 HAMAP-Rule:MF_03155}, MTA phosphorylase {ECO:0000255 HAMAP-Rule:MF_03155}, MTAP {ECO:0000255 HAMAP-Rule:MF_03155}, MTAPase {ECO:0000255 HAMAP-Rule:MF_03155}, MTAP {ECO:0000255 HAMAP-Rule:MF_03155}, MSAP
<b>Target/Specificity</b>	MTAP (AAH18625, 1 a.a. ~ 154 a.a) full-length recombinant protein with GST tag. MW of the GST tag alone is 26 KDa.
<b>Dilution</b>	WB~~1:500~1000 IF~~1:50~200 E~~N/A
<b>Format</b>	Clear, colorless solution in phosphate buffered saline, pH 7.2 .
<b>Storage</b>	Store at -20°C or lower. Aliquot to avoid repeated freezing and thawing.
<b>Precautions</b>	MTAP Antibody (monoclonal) (M01) is for research use only and not for use in diagnostic or therapeutic procedures.

## Background

This gene encodes an enzyme that plays a major role in polyamine metabolism and is important for the salvage of both adenine and methionine. The encoded enzyme is deficient in many cancers because this gene and the tumor suppressor p16 gene are co-deleted. Multiple alternatively spliced transcript variants have been described for this gene, but their full-length natures remain unknown.

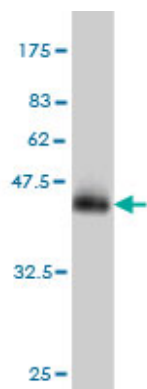
## References

---

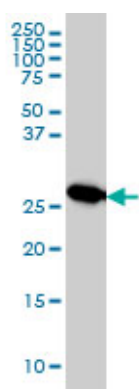
1.Integrative genomics identifies molecular alterations that challenge the linear model of melanoma progression.Rose AE, Poliseno L, Wang J, Clark M, Pearlman A, Wang G, Vega Y Saenz de Miera EC, Medicherla R, Christos PJ, Shapiro RL, Pavlick AC, Darvishian F, Zavadil J, Polsky D, Hernando E, Ostrer H, Osman I.Cancer Res. 2011 Feb 22. [Epub ahead of print]

## Images

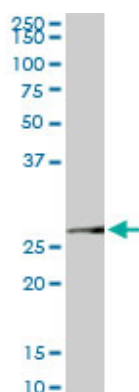
---



Antibody Reactive Against Recombinant Protein.Western Blot detection against Immunogen (42.68 KDa) .

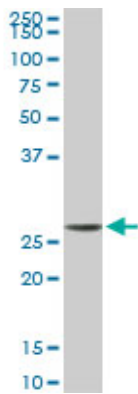


MTAP monoclonal antibody (M01), clone 2G4 Western Blot analysis of MTAP expression in HeLa ( (Cat # AT2924a )

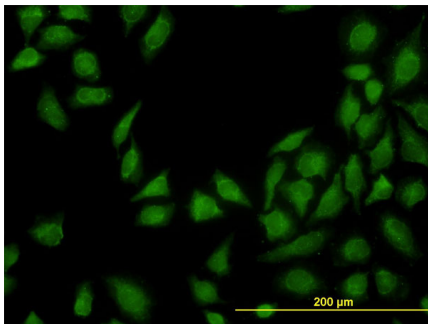
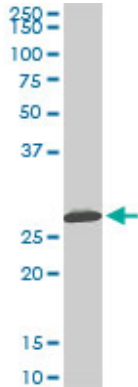


MTAP monoclonal antibody (M01), clone 2G4. Western Blot analysis of MTAP expression in PC-12 ( (Cat # AT2924a )

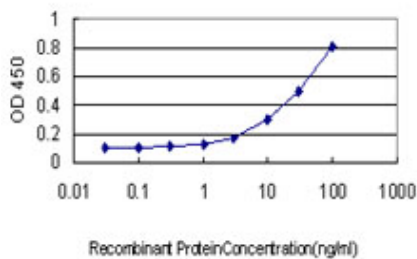
MTAP monoclonal antibody (M01), clone 2G4. Western Blot analysis of MTAP expression in Raw 264.7 ( (Cat # AT2924a )



MTAP monoclonal antibody (M01), clone 2G4. Western Blot analysis of MTAP expression in NIH/3T3 (Cat # AT2924a)



Immunofluorescence of monoclonal antibody to MTAP on HeLa cell. [antibody concentration 10 ug/ml]



Detection limit for recombinant GST tagged MTAP is approximately 0.3ng/ml as a capture antibody.

Please note: All products are 'FOR RESEARCH USE ONLY. NOT FOR USE IN DIAGNOSTIC OR THERAPEUTIC PROCEDURES'.