

# MTHFS Antibody (monoclonal) (M01)

Mouse monoclonal antibody raised against a partial recombinant MTHFS.

Catalog # AT2931a

## Product Information

---

<b>Application</b>	WB
<b>Primary Accession</b>	<a href="#">P49914</a>
<b>Other Accession</b>	<a href="#">NM_006441</a>
<b>Reactivity</b>	Human
<b>Host</b>	mouse
<b>Clonality</b>	monoclonal
<b>Isotype</b>	IgG1 Kappa
<b>Clone Names</b>	2C12
<b>Calculated MW</b>	23256

## Additional Information

---

<b>Gene ID</b>	10588
<b>Other Names</b>	5-formyltetrahydrofolate cyclo-ligase, 10-methenyl-tetrahydrofolate synthetase, MTHFS, Methenyl-THF synthetase, MTHFS
<b>Target/Specificity</b>	MTHFS (NP_006432, 104 a.a. ~ 203 a.a) partial recombinant protein with GST tag. MW of the GST tag alone is 26 KDa.
<b>Dilution</b>	WB~~1:500~1000
<b>Format</b>	Clear, colorless solution in phosphate buffered saline, pH 7.2 .
<b>Storage</b>	Store at -20°C or lower. Aliquot to avoid repeated freezing and thawing.
<b>Precautions</b>	MTHFS Antibody (monoclonal) (M01) is for research use only and not for use in diagnostic or therapeutic procedures.

## References

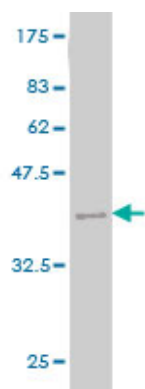
---

Maternal genes and facial clefts in offspring: a comprehensive search for genetic associations in two population-based cleft studies from Scandinavia. Jugessur A, et al. PLoS One, 2010 Jul 9. PMID 20634891. Genetic variation in TYMS in the one-carbon transfer pathway is associated with ovarian carcinoma types in the Ovarian Cancer Association Consortium. Kelemen LE, et al. Cancer Epidemiol Biomarkers Prev, 2010 Jul. PMID 20570913. Germline polymorphisms in the one-carbon metabolism pathway and DNA methylation in colorectal cancer. Hazra A, et al. Cancer Causes Control, 2010 Mar. PMID 19936946. Structural basis for the inhibition of human 5,10-methenyltetrahydrofolate synthetase by N10-substituted folate analogues. Wu D, et al. Cancer Res, 2009 Sep 15. PMID 19738041. An association study of 45 folate-related genes in spina bifida: Involvement of cubilin (CUBN) and tRNA aspartic acid

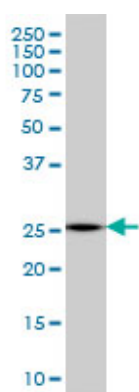
methyltransferase 1 (TRDMT1). Franke B, et al. Birth Defects Res A Clin Mol Teratol, 2009 Mar. PMID 19161160.

## Images

---



Antibody Reactive Against Recombinant Protein. Western Blot detection against Immunogen (36.74 KDa) .



MTHFS monoclonal antibody (M01), clone 2C12 Western Blot analysis of MTHFS expression in HeLa (Cat # AT2931a )

Please note: All products are 'FOR RESEARCH USE ONLY. NOT FOR USE IN DIAGNOSTIC OR THERAPEUTIC PROCEDURES'.