

MTMR2 Antibody (monoclonal) (M03)

Mouse monoclonal antibody raised against a partial recombinant MTMR2.

Catalog # AT2932a

Product Information

Application	WB, E
Primary Accession	Q13614
Other Accession	NM_016156
Reactivity	Human, Rat
Host	mouse
Clonality	monoclonal
Isotype	IgG2a Kappa
Clone Names	4G6
Calculated MW	73381

Additional Information

Gene ID	8898
Other Names	Myotubularin-related protein 2, Phosphatidylinositol-3, 5-bisphosphate 3-phosphatase, Phosphatidylinositol-3-phosphate phosphatase, MTMR2, KIAA1073
Target/Specificity	MTMR2 (NP_057240, 5 a.a. ~ 100 a.a) partial recombinant protein with GST tag. MW of the GST tag alone is 26 KDa.
Dilution	WB~~1:500~1000 E~~N/A
Format	Clear, colorless solution in phosphate buffered saline, pH 7.2 .
Storage	Store at -20°C or lower. Aliquot to avoid repeated freezing and thawing.
Precautions	MTMR2 Antibody (monoclonal) (M03) is for research use only and not for use in diagnostic or therapeutic procedures.

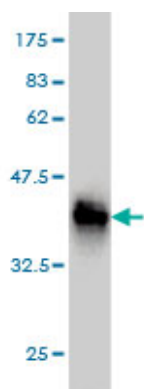
Background

This gene is a member of the myotubularin family. The encoded protein possesses phosphatase activity towards phosphatidylinositol-3-phosphate and phosphatidylinositol-3,5-bisphosphate. Mutations in this gene are a cause of Charcot-Marie-Tooth disease type 4B, an autosomal recessive demyelinating neuropathy. Multiple alternatively spliced transcript variants have been found for this gene.

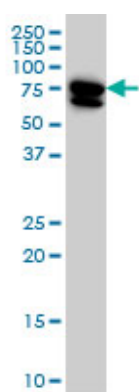
References

1.Dlg1, Sec8, and Mtmr2 Regulate Membrane Homeostasis in Schwann Cell Myelination.Bolis A, Coviello S,

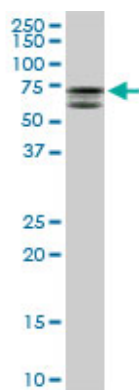
Images



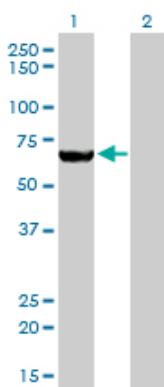
Antibody Reactive Against Recombinant Protein. Western Blot detection against Immunogen (36.3 KDa) .



MTMR2 monoclonal antibody (M03), clone 4G6 Western Blot analysis of MTMR2 expression in HeLa (Cat # AT2932a)



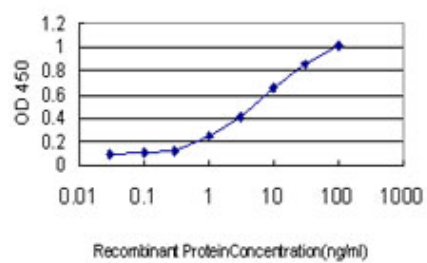
MTMR2 monoclonal antibody (M03), clone 4G6. Western Blot analysis of MTMR2 expression in PC-12 (Cat # AT2932a)



Western Blot analysis of MTMR2 expression in transfected 293T cell line by MTMR2 monoclonal antibody (M03), clone 4G6.

Lane 1: MTMR2 transfected lysate(66 KDa).
Lane 2: Non-transfected lysate.

Detection limit for recombinant GST tagged MTMR2 is approximately 0.3ng/ml as a capture antibody.



Please note: All products are 'FOR RESEARCH USE ONLY. NOT FOR USE IN DIAGNOSTIC OR THERAPEUTIC PROCEDURES'.