

MVD Antibody (monoclonal) (M01)

Mouse monoclonal antibody raised against a partial recombinant MVD.

Catalog # AT2940a

Product Information

Application	WB, IF, E
Primary Accession	P53602
Other Accession	NM_002461
Reactivity	Human
Host	mouse
Clonality	monoclonal
Isotype	IgG2a Kappa
Clone Names	2A7
Calculated MW	43405

Additional Information

Gene ID	4597
Other Names	Diphosphomevalonate decarboxylase, Mevalonate (diphospho)decarboxylase, MDDase, Mevalonate pyrophosphate decarboxylase, MVD, MPD
Target/Specificity	MVD (NP_002452, 301 a.a. ~ 398 a.a) partial recombinant protein with GST tag. MW of the GST tag alone is 26 KDa.
Dilution	WB~~1:500~1000 IF~~1:50~200 E~~N/A
Format	Clear, colorless solution in phosphate buffered saline, pH 7.2 .
Storage	Store at -20°C or lower. Aliquot to avoid repeated freezing and thawing.
Precautions	MVD Antibody (monoclonal) (M01) is for research use only and not for use in diagnostic or therapeutic procedures.

Background

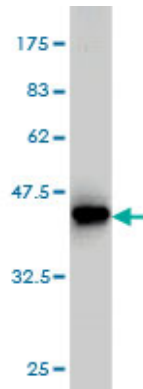
The enzyme mevalonate pyrophosphate decarboxylase catalyzes the conversion of mevalonate pyrophosphate into isopentenyl pyrophosphate in one of the early steps in cholesterol biosynthesis. It decarboxylates and dehydrates its substrate while hydrolyzing ATP.

References

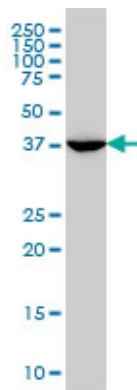
Variation at the NFATC2 Locus Increases the Risk of Thiazolinedione-Induced Edema in the Diabetes REduction Assessment with ramipril and rosiglitazone Medication (DREAM) Study. Bailey SD, et al. Diabetes Care, 2010 Jul 13. PMID 20628086. Gene-centric association signals for lipids and apolipoproteins identified

via the HumanCVD BeadChip. Talmud PJ, et al. Am J Hum Genet, 2009 Nov. PMID 19913121. Human mevalonate diphosphate decarboxylase: characterization, investigation of the mevalonate diphosphate binding site, and crystal structure. Voynova NE, et al. Arch Biochem Biophys, 2008 Dec 1. PMID 18823933. Multiple genetic variants along candidate pathways influence plasma high-density lipoprotein cholesterol concentrations. Lu Y, et al. J Lipid Res, 2008 Dec. PMID 18660489. A human protein-protein interaction network: a resource for annotating the proteome. Stelzl U, et al. Cell, 2005 Sep 23. PMID 16169070.

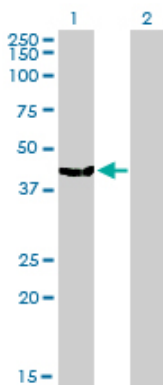
Images



Antibody Reactive Against Recombinant Protein. Western Blot detection against Immunogen (36.52 KDa) .

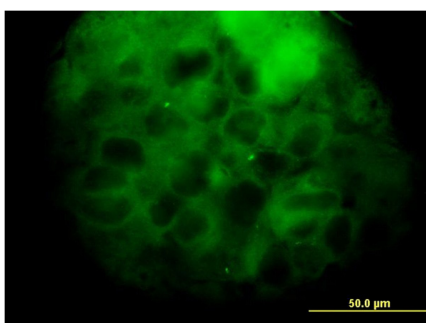


MVD monoclonal antibody (M01), clone 2A7 Western Blot analysis of MVD expression in A-431 ((Cat # AT2940a)

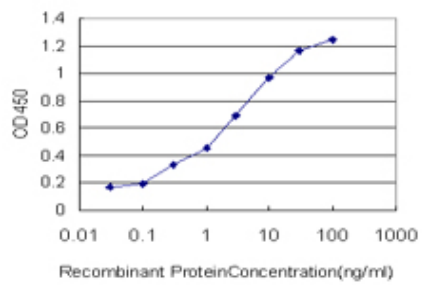


Western Blot analysis of MVD expression in transfected 293T cell line by MVD monoclonal antibody (M01), clone 2A7.

Lane 1: MVD transfected lysate(43.4 KDa).
Lane 2: Non-transfected lysate.



Immunofluorescence of monoclonal antibody to MVD on A-431 cell. [antibody concentration 10 ug/ml]



Detection limit for recombinant GST tagged MVD is approximately 0.1ng/ml as a capture antibody.

Please note: All products are 'FOR RESEARCH USE ONLY. NOT FOR USE IN DIAGNOSTIC OR THERAPEUTIC PROCEDURES'.