

MYBPC1 Antibody (monoclonal) (M01)

Mouse monoclonal antibody raised against a partial recombinant MYBPC1.

Catalog # AT2944a

Product Information

Application	WB, E
Primary Accession	Q00872
Other Accession	NM_206820
Reactivity	Human
Host	mouse
Clonality	monoclonal
Isotype	IgG2a Kappa
Clone Names	3G4
Calculated MW	128294

Additional Information

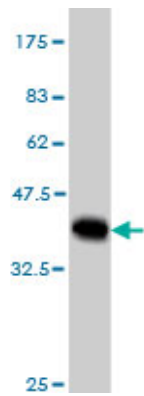
Gene ID	4604
Other Names	Myosin-binding protein C, slow-type, Slow MyBP-C, C-protein, skeletal muscle slow isoform, MYBPC1, MYBPCS
Target/Specificity	MYBPC1 (NP_996556, 506 a.a. ~ 603 a.a) partial recombinant protein with GST tag. MW of the GST tag alone is 26 KDa.
Dilution	WB~~1:500~1000 E~~N/A
Format	Clear, colorless solution in phosphate buffered saline, pH 7.2 .
Storage	Store at -20°C or lower. Aliquot to avoid repeated freezing and thawing.
Precautions	MYBPC1 Antibody (monoclonal) (M01) is for research use only and not for use in diagnostic or therapeutic procedures.

References

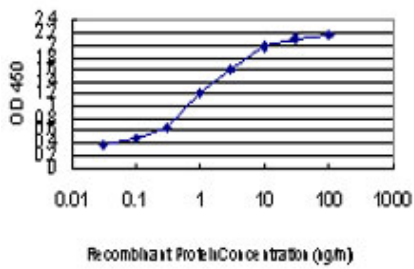
- 1.Myosin Binding Protein C Slow is a Novel Substrate for Protein Kinase A (PKA) and C (PKC) in Skeletal Muscle.Ackermann MA, Kontogianni-Konstantopoulos A.J Proteome Res. 2011 Sep 4. [Epub ahead of print]
- 2.Myosin Binding Protein-C Slow: An Intricate Subfamily of Proteins.Ackermann MA, Kontogianni-Konstantopoulos A.J Biomed Biotechnol. 2010;2010:652065. Epub 2010 Apr 8.

Images

Antibody Reactive Against Recombinant Protein.Western



Blot detection against Immunogen (36.52 KDa) .



Detection limit for recombinant GST tagged MYBPC1 is approximately 0.03ng/ml as a capture antibody.

Please note: All products are 'FOR RESEARCH USE ONLY. NOT FOR USE IN DIAGNOSTIC OR THERAPEUTIC PROCEDURES'.