

NDE1 Antibody (monoclonal) (M01)

Mouse monoclonal antibody raised against a full length recombinant NDE1.

Catalog # AT2987a

Product Information

Application	WB, IF, E
Primary Accession	Q9NXR1
Other Accession	BC001421
Reactivity	Human
Host	mouse
Clonality	monoclonal
Isotype	IgG1 Kappa
Clone Names	2G11-1C11
Calculated MW	37721

Additional Information

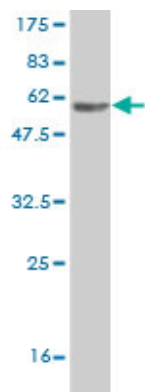
Gene ID	54820
Other Names	Nuclear distribution protein nudE homolog 1, NudE, NDE1, NUDE
Target/Specificity	NDE1 (AAH01421, 1 a.a. ~ 335 a.a) full-length recombinant protein with GST tag. MW of the GST tag alone is 26 KDa.
Dilution	WB~~1:500~1000 IF~~1:50~200 E~~N/A
Format	Clear, colorless solution in phosphate buffered saline, pH 7.2 .
Storage	Store at -20°C or lower. Aliquot to avoid repeated freezing and thawing.
Precautions	NDE1 Antibody (monoclonal) (M01) is for research use only and not for use in diagnostic or therapeutic procedures.

Background

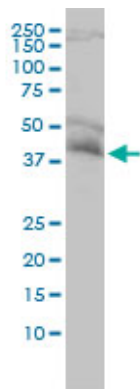
This gene encodes a member of the nuclear distribution E (NudE) family of proteins. The encoded protein is localized at the centrosome and interacts with other centrosome components as part of a multiprotein complex that regulates dynein function. This protein plays an essential role in microtubule organization, mitosis and neuronal migration. Alternative splicing results in multiple transcript variants.

References

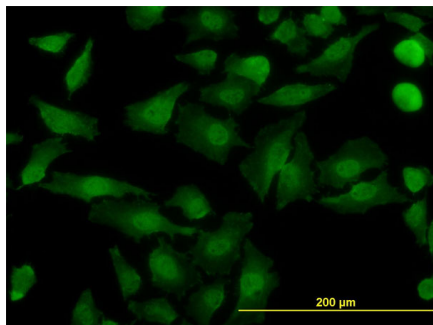
1.NDE1, NDEL1: Multimerisation, alternate splicing and DISC1 interaction.Bradshaw NJ, Christie S, Soares DC, Carlyle BC, Porteous DJ, Millar JK.Neurosci Lett. 2009 Jan 16;449(3):228-33. Epub 2008 Nov 6.



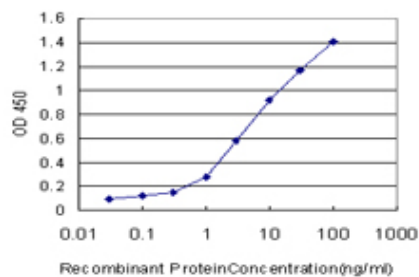
Antibody Reactive Against Recombinant Protein.Western Blot detection against Immunogen (62.59 KDa) .



NDE1 monoclonal antibody (M01), clone 2G11-1C11
Western Blot analysis of NDE1 expression in HeLa ((Cat # AT2987a)



Immunofluorescence of monoclonal antibody to NDE1 on HeLa cell. [antibody concentration 10 ug/ml]



Detection limit for recombinant GST tagged NDE1 is approximately 0.03ng/ml as a capture antibody.

Please note: All products are 'FOR RESEARCH USE ONLY. NOT FOR USE IN DIAGNOSTIC OR THERAPEUTIC PROCEDURES'.