

# NDUFB11 Antibody (monoclonal) (M12)

Mouse monoclonal antibody raised against a full length recombinant NDUFB11.

Catalog # AT3002a

## Product Information

---

<b>Application</b>	WB, E
<b>Primary Accession</b>	<a href="#">Q9NX14</a>
<b>Other Accession</b>	<a href="#">BC010665</a>
<b>Reactivity</b>	Human
<b>Host</b>	mouse
<b>Clonality</b>	monoclonal
<b>Isotype</b>	IgG2b Kappa
<b>Clone Names</b>	1D6
<b>Calculated MW</b>	17317

## Additional Information

---

<b>Gene ID</b>	54539
<b>Other Names</b>	NADH dehydrogenase [ubiquinone] 1 beta subcomplex subunit 11, mitochondrial, Complex I-ESSS, CI-ESSS, NADH-ubiquinone oxidoreductase ESSS subunit, Neuronal protein 173, Np173, p173, NDUFB11
<b>Target/Specificity</b>	NDUFB11 (AAH10665, 1 a.a. ~ 153 a.a) full-length recombinant protein with GST tag. MW of the GST tag alone is 26 KDa.
<b>Dilution</b>	WB~~1:500~1000 E~~N/A
<b>Format</b>	Clear, colorless solution in phosphate buffered saline, pH 7.2 .
<b>Storage</b>	Store at -20°C or lower. Aliquot to avoid repeated freezing and thawing.
<b>Precautions</b>	NDUFB11 Antibody (monoclonal) (M12) is for research use only and not for use in diagnostic or therapeutic procedures.

## Background

---

NDUFB11 is a component of mitochondrial complex I. Complex I catalyzes the first step in the electron transport chain, the transfer of 2 electrons from NADH to ubiquinone, coupled to the translocation of 4 protons across the membrane (Carroll et al., 2002 [PubMed 12381726]).

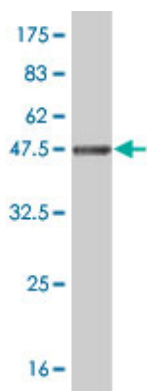
## References

---

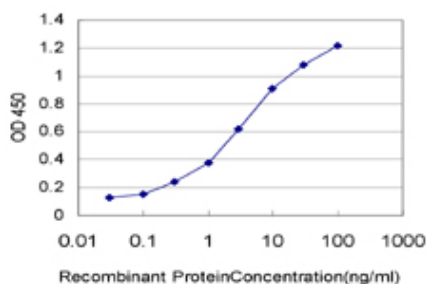
The NDUFB11 gene is not a modifier in Leber hereditary optic neuropathy. Petruzzella V, et al. Biochem Biophys Res Commun, 2007 Mar 30. PMID 17292333. The DNA sequence of the human X chromosome. Ross

MT, et al. Nature, 2005 Mar 17. PMID 15772651. The status, quality, and expansion of the NIH full-length cDNA project: the Mammalian Gene Collection (MGC). Gerhard DS, et al. Genome Res, 2004 Oct. PMID 15489334. Complete sequencing and characterization of 21,243 full-length human cDNAs. Ota T, et al. Nat Genet, 2004 Jan. PMID 14702039. The secreted protein discovery initiative (SPDI), a large-scale effort to identify novel human secreted and transmembrane proteins: a bioinformatics assessment. Clark HF, et al. Genome Res, 2003 Oct. PMID 12975309.

## Images



Antibody Reactive Against Recombinant Protein. Western Blot detection against Immunogen (42.57 KDa) .



Detection limit for recombinant GST tagged NDUFB11 is approximately 0.03ng/ml as a capture antibody.

Please note: All products are 'FOR RESEARCH USE ONLY. NOT FOR USE IN DIAGNOSTIC OR THERAPEUTIC PROCEDURES'.