

NEK11 Antibody (monoclonal) (M01)

Mouse monoclonal antibody raised against a full length recombinant NEK11.

Catalog # AT3014a

Product Information

| | |
|--------------------------|--------------------------|
| Application | WB, IHC, IF, E |
| Primary Accession | Q8NG66 |
| Other Accession | BC028587 |
| Reactivity | Human |
| Host | mouse |
| Clonality | monoclonal |
| Isotype | IgG1 kappa |
| Clone Names | 4E1-1F4 |
| Calculated MW | 74192 |

Additional Information

| | |
|---------------------------|---|
| Gene ID | 79858 |
| Other Names | Serine/threonine-protein kinase Nek11, Never in mitosis A-related kinase 11, NimA-related protein kinase 11, NEK11 (HGNC:18593) |
| Target/Specificity | NEK11 (AAH28587, 1 a.a. ~ 482 a.a) full-length recombinant protein with GST tag. MW of the GST tag alone is 26 KDa. |
| Dilution | WB~~1:500~1000 IHC~~1:100~500 IF~~1:50~200 E~~N/A |
| Format | Clear, colorless solution in phosphate buffered saline, pH 7.2 . |
| Storage | Store at -20°C or lower. Aliquot to avoid repeated freezing and thawing. |
| Precautions | NEK11 Antibody (monoclonal) (M01) is for research use only and not for use in diagnostic or therapeutic procedures. |

Background

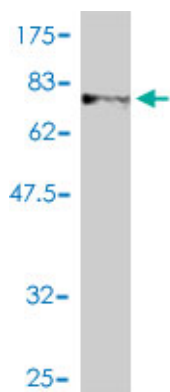
This gene encodes a member of the never in mitosis gene A family of kinases. The encoded protein localizes to the nucleoli, and may function with NEK2A in the S-phase checkpoint. The encoded protein appears to play roles in DNA replication and response to genotoxic stress. Alternatively spliced transcript variants have been described.

References

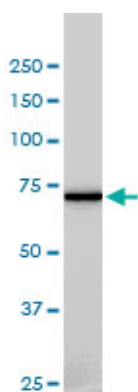
Personalized smoking cessation: interactions between nicotine dose, dependence and quit-success genotype score. Rose JE, et al. Mol Med, 2010 Jul-Aug. PMID 20379614.NEK11: linking CHK1 and CDC25A in DNA

damage checkpoint signaling. Sørensen CS, et al. Cell Cycle, 2010 Feb 1. PMID 20090422. NEK11 regulates CDC25A degradation and the IR-induced G2/M checkpoint. Melixetian M, et al. Nat Cell Biol, 2009 Oct. PMID 19734889. Molecular genetics of successful smoking cessation: convergent genome-wide association study results. Uhl GR, et al. Arch Gen Psychiatry, 2008 Jun. PMID 18519826. Toward a confocal subcellular atlas of the human proteome. Barbe L, et al. Mol Cell Proteomics, 2008 Mar. PMID 18029348.

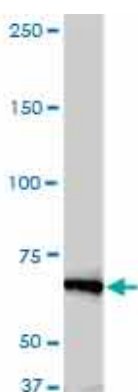
Images



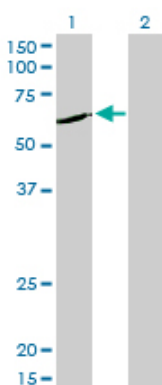
Antibody Reactive Against Recombinant Protein. Western Blot detection against Immunogen (78.54 kDa) .



NEK11 monoclonal antibody (M01), clone 4E1-1F4
Western Blot analysis of NEK11 expression in HL-60 ((Cat # AT3014a)

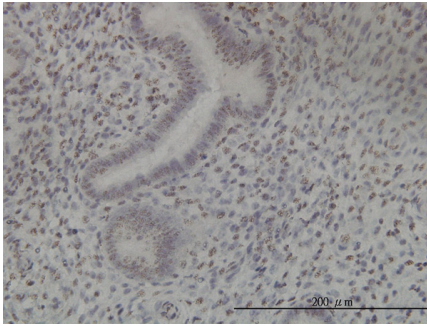


NEK11 monoclonal antibody (M01), clone 4E1-1F4.
Western Blot analysis of NEK11 expression in A-431 ((Cat # AT3014a)

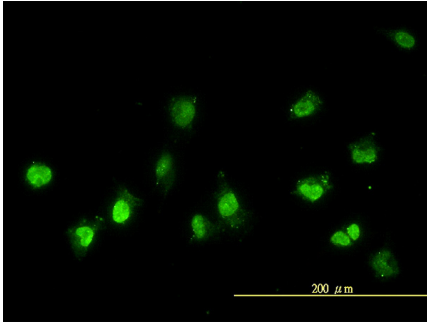


Western Blot analysis of NEK11 expression in transfected 293T cell line by NEK11 monoclonal antibody (M01), clone 4E1-1F4.

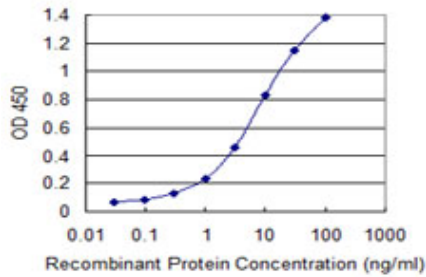
Lane 1: NEK11 transfected lysate (55.5 kDa).
Lane 2: Non-transfected lysate.



Immunoperoxidase of monoclonal antibody to NEK11 on formalin-fixed paraffin-embedded human endometrium tissue. [antibody concentration 3 ug/ml]



Immunofluorescence of monoclonal antibody to NEK11 on HeLa cell. [antibody concentration 10 ug/ml]



Detection limit for recombinant GST tagged NEK11 is 0.1 ng/ml as a capture antibody.

Please note: All products are 'FOR RESEARCH USE ONLY. NOT FOR USE IN DIAGNOSTIC OR THERAPEUTIC PROCEDURES'.