

# NEK2 Antibody (monoclonal) (M11)

Mouse monoclonal antibody raised against a partial recombinant NEK2.

Catalog # AT3016a

## Product Information

---

<b>Application</b>	WB, IF, E
<b>Primary Accession</b>	<a href="#">P51955</a>
<b>Other Accession</b>	<a href="#">BC043502</a>
<b>Reactivity</b>	Human, Mouse, Rat
<b>Host</b>	mouse
<b>Clonality</b>	monoclonal
<b>Isotype</b>	IgG2a Kappa
<b>Clone Names</b>	3B7
<b>Calculated MW</b>	51763

## Additional Information

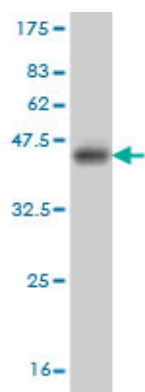
---

<b>Gene ID</b>	4751
<b>Other Names</b>	Serine/threonine-protein kinase Nek2, HSPK 21, Never in mitosis A-related kinase 2, NimA-related protein kinase 2, NimA-like protein kinase 1, NEK2, NEK2A, NLK1
<b>Target/Specificity</b>	NEK2 (AAH43502, 331 a.a. ~ 445 a.a) partial recombinant protein with GST tag. MW of the GST tag alone is 26 KDa.
<b>Dilution</b>	WB~~1:500~1000 IF~~1:50~200 E~~N/A
<b>Format</b>	Clear, colorless solution in phosphate buffered saline, pH 7.2 .
<b>Storage</b>	Store at -20°C or lower. Aliquot to avoid repeated freezing and thawing.
<b>Precautions</b>	NEK2 Antibody (monoclonal) (M11) is for research use only and not for use in diagnostic or therapeutic procedures.

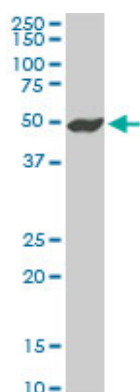
## References

---

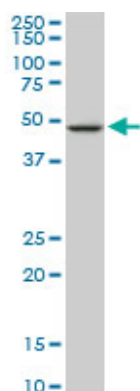
Involvement of a centrosomal protein kendrin in the maintenance of centrosome cohesion by modulating Nek2A kinase activity. Matsuo K, et al. Biochem Biophys Res Commun, 2010 Jul 23. PMID 20599736. The Ras oncogene signals centrosome amplification in mammary epithelial cells through cyclin D1/Cdk4 and Nek2. Zeng X, et al. Oncogene, 2010 Sep 9. PMID 20581865. Centrosome-related genes, genetic variation, and risk of breast cancer. Olson JE, et al. Breast Cancer Res Treat, 2010 May 28. PMID 20508983. Three genetic developmental stages of papillary renal cell tumors: duplication of chromosome 1q marks fatal progression. Szponar A, et al. Int J Cancer, 2009 May 1. PMID 19123481. Nek2 as a novel molecular target for the treatment of breast carcinoma. Tsunoda N, et al. Cancer Sci, 2009 Jan. PMID 19038001.



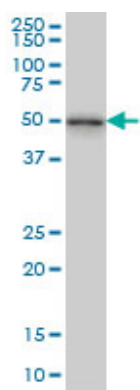
Antibody Reactive Against Recombinant Protein. Western Blot detection against Immunogen (38.28 KDa) .



NEK2 monoclonal antibody (M11), clone 3B7. Western Blot analysis of NEK2 expression in PC-12 ( (Cat # AT3016a )

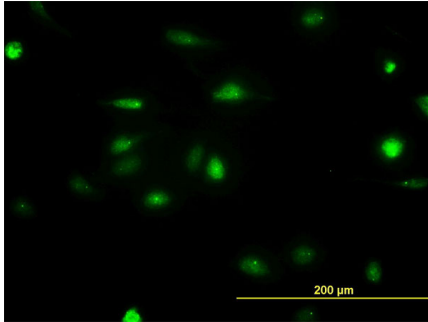
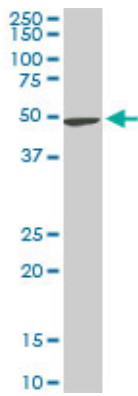


NEK2 monoclonal antibody (M11), clone 3B7. Western Blot analysis of NEK2 expression in Raw 264.7 ( (Cat # AT3016a )

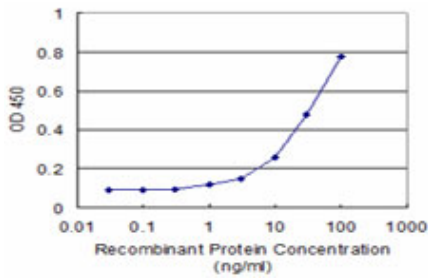


NEK2 monoclonal antibody (M11), clone 3B7 Western Blot analysis of NEK2 expression in MCF-7 ( (Cat # AT3016a )

NEK2 monoclonal antibody (M11), clone 3B7. Western Blot analysis of NEK2 expression in NIH/3T3 ( (Cat # AT3016a )



Immunofluorescence of monoclonal antibody to NEK2 on HeLa cell. [antibody concentration 25 ug/ml]



Detection limit for recombinant GST tagged NEK2 is approximately 3ng/ml as a capture antibody.

Please note: All products are 'FOR RESEARCH USE ONLY. NOT FOR USE IN DIAGNOSTIC OR THERAPEUTIC PROCEDURES'.