

NFE2L2 Antibody (monoclonal) (M03)

Mouse monoclonal antibody raised against a partial recombinant NFE2L2.

Catalog # AT3031a

Product Information

Application	WB, IF, E
Primary Accession	Q16236
Other Accession	BC011558
Reactivity	Human
Host	mouse
Clonality	monoclonal
Isotype	IgG2b Kappa
Clone Names	1B8
Calculated MW	67827

Additional Information

Gene ID	4780
Other Names	Nuclear factor erythroid 2-related factor 2, NF-E2-related factor 2, NFE2-related factor 2, HEBP1, Nuclear factor, erythroid derived 2, like 2, NFE2L2, NRF2
Target/Specificity	NFE2L2 (AAH11558, 71 a.a. ~ 170 a.a) partial recombinant protein with GST tag. MW of the GST tag alone is 26 KDa.
Dilution	WB~~1:500~1000 IF~~1:50~200 E~~N/A
Format	Clear, colorless solution in phosphate buffered saline, pH 7.2 .
Storage	Store at -20°C or lower. Aliquot to avoid repeated freezing and thawing.
Precautions	NFE2L2 Antibody (monoclonal) (M03) is for research use only and not for use in diagnostic or therapeutic procedures.

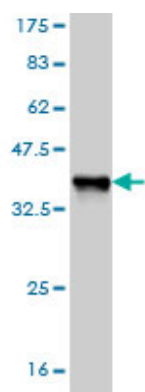
Background

NFE2 (MIM 601490), NFE2L1 (MIM 163260), and NFE2L2 comprise a family of human genes encoding basic leucine zipper (bZIP) transcription factors. They share highly conserved regions that are distinct from other bZIP families, such as JUN (MIM 165160) and FOS (MIM 164810), although remaining regions have diverged considerably from each other (Chan et al., 1995 [PubMed 7868116]).

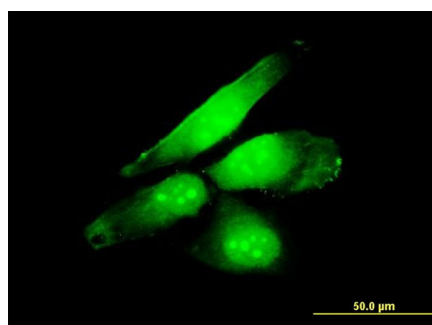
References

- 1.Examining the endogenous antioxidant response through immunofluorescent analysis of Nrf2 in

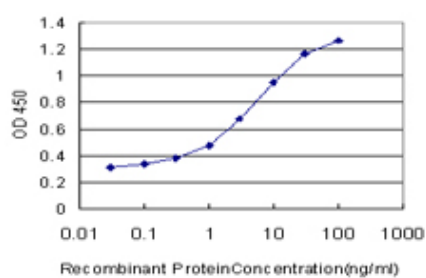
Images



Antibody Reactive Against Recombinant Protein.Western Blot detection against Immunogen (36.63 KDa) .



Immunofluorescence of monoclonal antibody to NFE2L2 on HeLa cell . [antibody concentration 10 ug/ml]



Detection limit for recombinant GST tagged NFE2L2 is approximately 0.1ng/ml as a capture antibody.

Please note: All products are 'FOR RESEARCH USE ONLY. NOT FOR USE IN DIAGNOSTIC OR THERAPEUTIC PROCEDURES'.