

## NHLH2 Antibody (monoclonal) (M05)

Mouse monoclonal antibody raised against a full length recombinant NHLH2.

Catalog # AT3047a

### Product Information

---

<b>Application</b>	WB, IF, E
<b>Primary Accession</b>	<a href="#">Q02577</a>
<b>Other Accession</b>	<a href="#">NM_005599</a>
<b>Reactivity</b>	Human
<b>Host</b>	mouse
<b>Clonality</b>	monoclonal
<b>Isotype</b>	IgG2a Kappa
<b>Clone Names</b>	2A3
<b>Calculated MW</b>	15018

### Additional Information

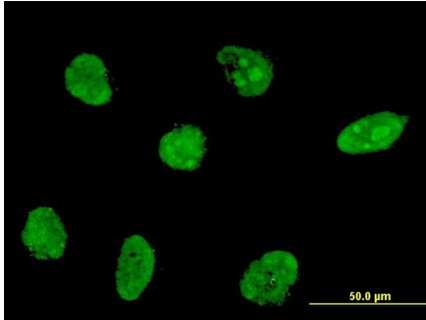
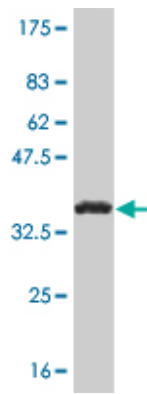
---

<b>Gene ID</b>	4808
<b>Other Names</b>	Helix-loop-helix protein 2, HEN-2, Class A basic helix-loop-helix protein 34, bHLHa34, Nescient helix loop helix 2, NSCL-2, NHLH2, BHLHA34, HEN2, KIAA0490
<b>Target/Specificity</b>	NHLH2 (NP_005590, 36 a.a. ~ 135 a.a) full length recombinant protein with GST tag. MW of the GST tag alone is 26 KDa.
<b>Dilution</b>	WB~~1:500~1000 IF~~1:50~200 E~~N/A
<b>Format</b>	Clear, colorless solution in phosphate buffered saline, pH 7.2 .
<b>Storage</b>	Store at -20°C or lower. Aliquot to avoid repeated freezing and thawing.
<b>Precautions</b>	NHLH2 Antibody (monoclonal) (M05) is for research use only and not for use in diagnostic or therapeutic procedures.

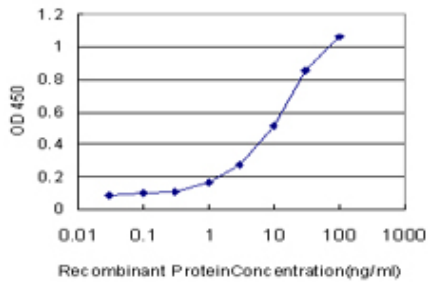
### Images

---

Antibody Reactive Against Recombinant Protein.Western Blot detection against Immunogen (37 KDa) .



Immunofluorescence of monoclonal antibody to NHLH2 on HeLa cell . [antibody concentration 10 ug/ml]



Detection limit for recombinant GST tagged NHLH2 is approximately 0.1ng/ml as a capture antibody.

Please note: All products are 'FOR RESEARCH USE ONLY. NOT FOR USE IN DIAGNOSTIC OR THERAPEUTIC PROCEDURES'.