

NJMU-R1 Antibody (monoclonal) (M01)

Mouse monoclonal antibody raised against a full length recombinant NJMU-R1.

Catalog # AT3053a

Product Information

Application	WB, IF, E
Primary Accession	Q9HAS0
Other Accession	BC054035
Reactivity	Human
Host	mouse
Clonality	monoclonal
Isotype	IgG1 kappa
Clone Names	3F8
Calculated MW	44622

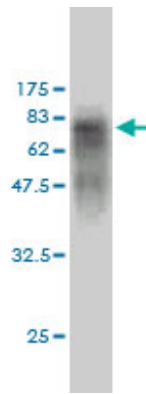
Additional Information

Gene ID	64149
Other Names	Protein Njmu-R1, C17orf75
Target/Specificity	NJMU-R1 (AAH54035, 1 a.a. ~ 396 a.a) full-length recombinant protein with GST tag. MW of the GST tag alone is 26 KDa.
Dilution	WB~~1:500~1000 IF~~1:50~200 E~~N/A
Format	Clear, colorless solution in phosphate buffered saline, pH 7.2 .
Storage	Store at -20°C or lower. Aliquot to avoid repeated freezing and thawing.
Precautions	NJMU-R1 Antibody (monoclonal) (M01) is for research use only and not for use in diagnostic or therapeutic procedures.

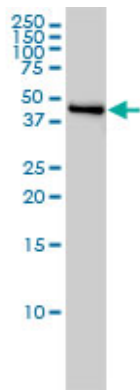
References

Toward a confocal subcellular atlas of the human proteome. Barbe L, et al. Mol Cell Proteomics, 2008 Mar. PMID 18029348. The status, quality, and expansion of the NIH full-length cDNA project: the Mammalian Gene Collection (MGC). Gerhard DS, et al. Genome Res, 2004 Oct. PMID 15489334. Generation and initial analysis of more than 15,000 full-length human and mouse cDNA sequences. Strausberg RL, et al. Proc Natl Acad Sci U S A, 2002 Dec 24. PMID 12477932. Large-scale concatenation cDNA sequencing. Yu W, et al. Genome Res, 1997 Apr. PMID 9110174. A double adaptor method for improved shotgun library construction. Andersson B, et al. Anal Biochem, 1996 Apr 5. PMID 8619474.

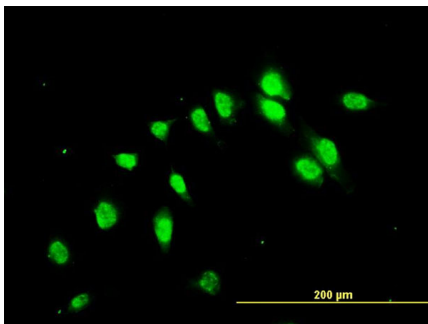
Images



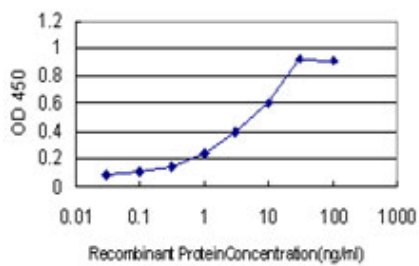
Antibody Reactive Against Recombinant Protein. Western Blot detection against Immunogen (69.3 KDa) .



NJMU-R1 monoclonal antibody (M01), clone 3F8 Western Blot analysis of NJMU-R1 expression in HeLa S3 NE (Cat # AT3053a)



Immunofluorescence of monoclonal antibody to C17orf75 on HeLa cell. [antibody concentration 10 ug/ml]



Detection limit for recombinant GST tagged C17orf75 is approximately 0.1 ng/ml as a capture antibody.

Please note: All products are 'FOR RESEARCH USE ONLY. NOT FOR USE IN DIAGNOSTIC OR THERAPEUTIC PROCEDURES'.