

# NKIRAS2 Antibody (monoclonal) (M02)

Mouse monoclonal antibody raised against a full length recombinant NKIRAS2.

Catalog # AT3055a

## Product Information

---

<b>Application</b>	WB, IHC, E
<b>Primary Accession</b>	<a href="#">Q9NYR9</a>
<b>Other Accession</b>	<a href="#">BC007450</a>
<b>Reactivity</b>	Human
<b>Host</b>	mouse
<b>Clonality</b>	monoclonal
<b>Isotype</b>	IgG1 Kappa
<b>Clone Names</b>	2G9
<b>Calculated MW</b>	21508

## Additional Information

---

<b>Gene ID</b>	28511
<b>Other Names</b>	NF-kappa-B inhibitor-interacting Ras-like protein 2, I-kappa-B-interacting Ras-like protein 2, Kappa B-Ras protein 2, KappaB-Ras2, NKIRAS2, KBRAS2
<b>Target/Specificity</b>	NKIRAS2 (AAH07450, 1 a.a. ~ 191 a.a) full-length recombinant protein with GST tag. MW of the GST tag alone is 26 KDa.
<b>Dilution</b>	WB~~1:500~1000 IHC~~1:100~500 E~~N/A
<b>Format</b>	Clear, colorless solution in phosphate buffered saline, pH 7.2 .
<b>Storage</b>	Store at -20°C or lower. Aliquot to avoid repeated freezing and thawing.
<b>Precautions</b>	NKIRAS2 Antibody (monoclonal) (M02) is for research use only and not for use in diagnostic or therapeutic procedures.

## References

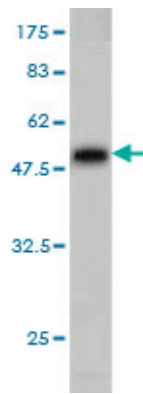
---

1.Estradiol suppresses NF-kappaB activation through coordinated regulation of let-7a and miR-125b in primary human macrophages.Murphy AJ, Guyre PM, Pioli PA.J Immunol. 2010 May 1;184(9):5029-37. Epub 2010 Mar 29.

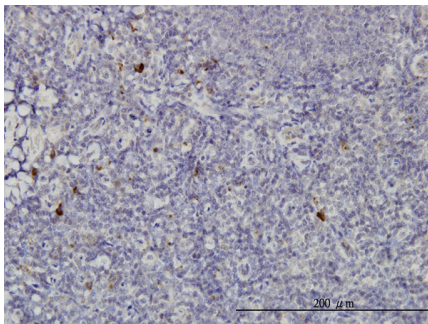
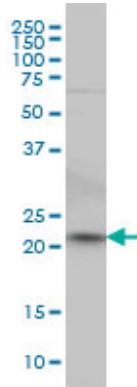
## Images

---

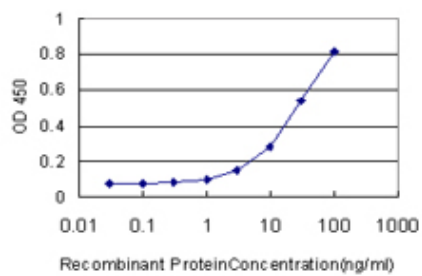
Antibody Reactive Against Recombinant Protein.Western Blot detection against Immunogen (46.75 KDa) .



NKIRAS2 monoclonal antibody (M02), clone 2G9 Western Blot analysis of NKIRAS2 expression in HeLa (Cat # AT3055a)



Immunoperoxidase of monoclonal antibody to NKIRAS2 on formalin-fixed paraffin-embedded human tonsil. [antibody concentration 3 ug/ml]



Detection limit for recombinant GST tagged NKIRAS2 is approximately 1ng/ml as a capture antibody.

Please note: All products are 'FOR RESEARCH USE ONLY. NOT FOR USE IN DIAGNOSTIC OR THERAPEUTIC PROCEDURES'.