

NKX6-1 Antibody (monoclonal) (M02)

Mouse monoclonal antibody raised against a full length recombinant NKX6-1.

Catalog # AT3061a

Product Information

Application	WB
Primary Accession	P78426
Other Accession	NM_006168
Reactivity	Human
Host	mouse
Clonality	monoclonal
Isotype	IgG2a Kappa
Clone Names	1A7
Calculated MW	37849

Additional Information

Gene ID	4825
Other Names	Homeobox protein Nkx-61, Homeobox protein NK-6 homolog A, NKX6-1, NKX6A
Target/Specificity	NKX6-1 (NP_006159, 191 a.a. ~ 275 a.a) full length recombinant protein with GST tag. MW of the GST tag alone is 26 KDa.
Dilution	WB~~1:500~1000
Format	Clear, colorless solution in phosphate buffered saline, pH 7.2 .
Storage	Store at -20°C or lower. Aliquot to avoid repeated freezing and thawing.
Precautions	NKX6-1 Antibody (monoclonal) (M02) is for research use only and not for use in diagnostic or therapeutic procedures.

Background

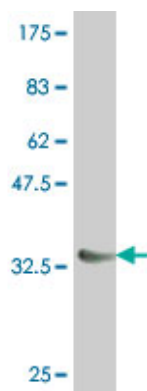
In the pancreas, NKX6.1 is required for the development of beta cells and is a potent bifunctional transcription regulator that binds to AT-rich sequences within the promoter region of target genes Iype et al. (2004) [PubMed 15056733].

References

Distinct regulation of hepatic nuclear factor 1alpha by NKX6.1 in pancreatic beta cells. Donelan W, et al. J Biol Chem, 2010 Apr 16. PMID 20106981. Alterations of gastric homeoprotein expression in Helicobacter pylori infection, incisural antralisation, and intestinal metaplasia. Zhu S, et al. Dig Dis Sci, 2009 May. PMID

18754095.Stimulation of human and rat islet beta-cell proliferation with retention of function by the homeodomain transcription factor Nkx6.1. Schisler JC, et al. Mol Cell Biol, 2008 May. PMID 18347054.Association studies of variants in the genes involved in pancreatic beta-cell function in type 2 diabetes in Japanese subjects. Yokoi N, et al. Diabetes, 2006 Aug. PMID 16873704.Differentiation of insulin-producing cells from human neural progenitor cells. Hori Y, et al. PLoS Med, 2005 Apr. PMID 15839736.

Images



Antibody Reactive Against Recombinant Protein.Western Blot detection against Immunogen (35.46 KDa) .

Please note: All products are 'FOR RESEARCH USE ONLY. NOT FOR USE IN DIAGNOSTIC OR THERAPEUTIC PROCEDURES'.