

NME1 Antibody (monoclonal) (M02)

Mouse monoclonal antibody raised against a partial recombinant NME1.

Catalog # AT3065a

Product Information

Application	WB, IHC, IF, IP, E
Primary Accession	P15531
Other Accession	NM_000269
Reactivity	Human
Host	mouse
Clonality	monoclonal
Isotype	IgG1 Kappa
Clone Names	1D7
Calculated MW	17149

Additional Information

Gene ID	4830
Other Names	Nucleoside diphosphate kinase A, NDK A, NDP kinase A, Granzyme A-activated DNase, GAAD, Metastasis inhibition factor nm23, NM23-H1, Tumor metastatic process-associated protein, NME1, NDPKA, NM23
Target/Specificity	NME1 (NP_000260, 43 a.a. ~ 152 a.a) partial recombinant protein with GST tag. MW of the GST tag alone is 26 KDa.
Dilution	WB~~1:500~1000 IHC~~1:100~500 IF~~1:50~200 IP~~N/A E~~N/A
Format	Clear, colorless solution in phosphate buffered saline, pH 7.2 .
Storage	Store at -20°C or lower. Aliquot to avoid repeated freezing and thawing.
Precautions	NME1 Antibody (monoclonal) (M02) is for research use only and not for use in diagnostic or therapeutic procedures.

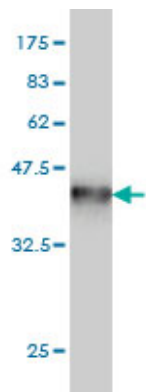
Background

This gene (NME1) was identified because of its reduced mRNA transcript levels in highly metastatic cells. Nucleoside diphosphate kinase (NDK) exists as a hexamer composed of 'A' (encoded by this gene) and 'B' (encoded by NME2) isoforms. Mutations in this gene have been identified in aggressive neuroblastomas. Two transcript variants encoding different isoforms have been found for this gene. Co-transcription of this gene and the neighboring downstream gene (NME2) generates naturally-occurring transcripts (NME1-NME2), which encodes a fusion protein comprised of sequence sharing identity with each individual gene product.

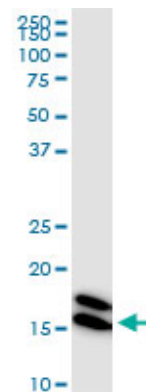
References

1.Identification of Antigenic Proteins Associated with Trichloroethylene-Induced Autoimmune Disease by Serological Proteome Analysis.Liu J, Xing X, Huang H, Jiang Y, He H, Xu X, Yuan J, Zhou L, Yang L, Zhuang Z.Toxicol Appl Pharmacol. 2009 Nov 1;240(3):393-400. Epub 2009 Aug 6.

Images



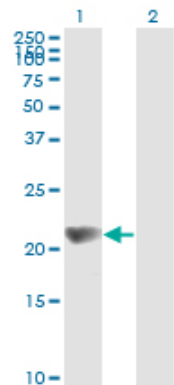
Antibody Reactive Against Recombinant Protein.Western Blot detection against Immunogen (37.84 KDa) .



NME1 monoclonal antibody (M02), clone 1D7. Western Blot analysis of NME1 expression in HeLa((Cat # AT3065a)



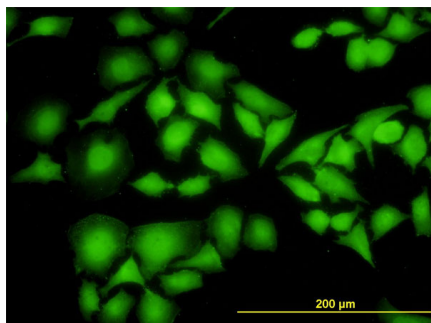
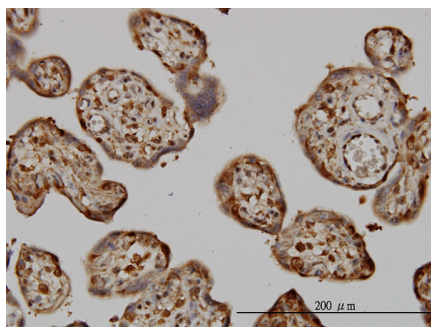
NME1 monoclonal antibody (M02), clone 1D7. Western Blot analysis of NME1 expression in different cell lines.



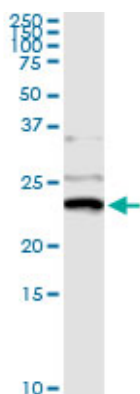
Western Blot analysis of NME1 expression in transfected 293T cell line by NME1 monoclonal antibody (M02), clone 1D7.

Lane 1: NME1 transfected lysate(19.7 KDa).
Lane 2: Non-transfected lysate.

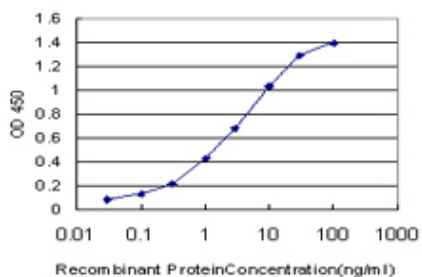
Immunoperoxidase of monoclonal antibody to NME1 on formalin-fixed paraffin-embedded human placenta. [antibody concentration 3 ug/ml]



Immunofluorescence of monoclonal antibody to NME1 on HeLa cell. [antibody concentration 10 ug/ml]



Immunoprecipitation of NME1 transfected lysate using anti-NME1 monoclonal antibody and Protein A Magnetic Bead ([U0007](#)), and immunoblotted with NME1 MaxPab rabbit polyclonal antibody.



Detection limit for recombinant GST tagged NME1 is approximately 0.1ng/ml as a capture antibody.

Please note: All products are 'FOR RESEARCH USE ONLY. NOT FOR USE IN DIAGNOSTIC OR THERAPEUTIC PROCEDURES'.