

NME2 Antibody (monoclonal) (M06)

Mouse monoclonal antibody raised against a partial recombinant NME2.

Catalog # AT3066a

Product Information

Application	WB, IHC, IF, E
Primary Accession	P22392
Other Accession	NM_002512
Reactivity	Human, Mouse, Rat
Host	mouse
Clonality	monoclonal
Isotype	IgG3 Kappa
Clone Names	1D3
Calculated MW	17298

Additional Information

Gene ID	4831
Other Names	Nucleoside diphosphate kinase B, NDK B, NDP kinase B, C-myc purine-binding transcription factor PUF, Histidine protein kinase NDKB, nm23-H2, NME2, NM23B
Target/Specificity	NME2 (NP_002503, 51 a.a. ~ 152 a.a) partial recombinant protein with GST tag. MW of the GST tag alone is 26 KDa.
Dilution	WB~~1:500~1000 IHC~~1:100~500 IF~~1:50~200 E~~N/A
Format	Clear, colorless solution in phosphate buffered saline, pH 7.2 .
Storage	Store at -20°C or lower. Aliquot to avoid repeated freezing and thawing.
Precautions	NME2 Antibody (monoclonal) (M06) is for research use only and not for use in diagnostic or therapeutic procedures.

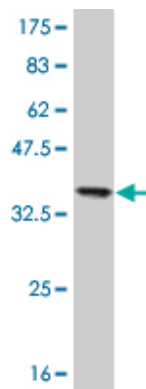
Background

Nucleoside diphosphate kinase (NDK) exists as a hexamer composed of 'A' (encoded by NME1) and 'B' (encoded by this gene) isoforms. Multiple alternatively spliced transcript variants encoding the same isoform have been found for this gene. Co-transcription of this gene and the neighboring upstream gene (NME1) generates naturally-occurring transcripts (NME1-NME2) which encode a fusion protein comprised of sequence sharing identity with each individual gene product.

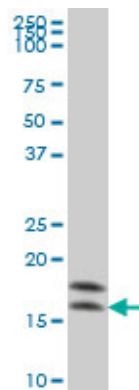
References

1.Early Insights into the Function of KIAA1199, a Markedly Overexpressed Protein in Human Colorectal Tumors.Tiwari A, Schneider M, Fiorino A, Haider R, Okoniewski MJ, Roschitzki B, Uzozie A, Menigatti M, Jiricny J, Marra G.PLoS One. 2013 Jul 23;8(7):e69473

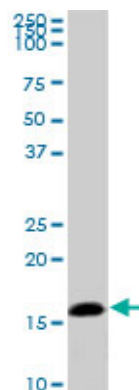
Images



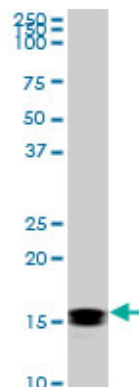
Antibody Reactive Against Recombinant Protein.Western Blot detection against Immunogen (36.96 KDa) .



NME2 monoclonal antibody (M06), clone 1D3 Western Blot analysis of NME2 expression in HeLa ((Cat # AT3066a)

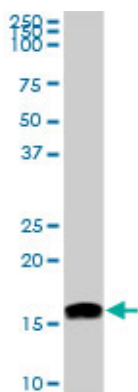


NME2 monoclonal antibody (M06), clone 1D3. Western Blot analysis of NME2 expression in PC-12 ((Cat # AT3066a)

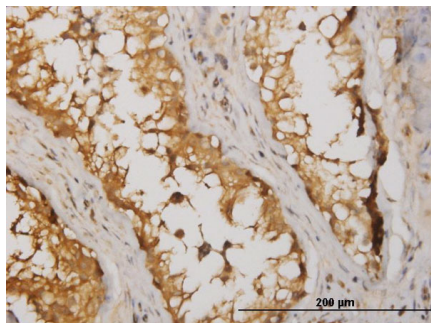


NME2 monoclonal antibody (M06), clone 1D3. Western Blot analysis of NME2 expression in Raw 264.7 ((Cat # AT3066a)

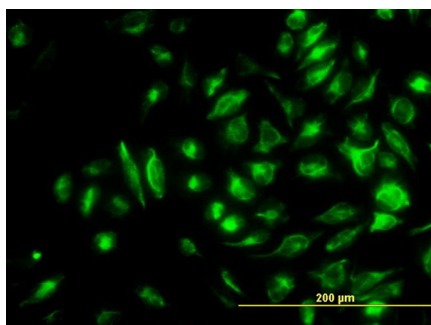
NME2 monoclonal antibody (M06), clone 1D3. Western



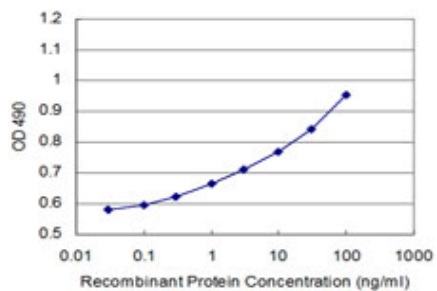
Blot analysis of NME2 expression in NIH/3T3 (Cat # AT3066a)



Immunoperoxidase of monoclonal antibody to NME2 on formalin-fixed paraffin-embedded human testis. [antibody concentration 1.5 ug/ml]



Immunofluorescence of monoclonal antibody to NME2 on HeLa cell. [antibody concentration 10 ug/ml]



Detection limit for recombinant GST tagged NME2 is 0.3 ng/ml as a capture antibody.

Please note: All products are 'FOR RESEARCH USE ONLY. NOT FOR USE IN DIAGNOSTIC OR THERAPEUTIC PROCEDURES'.