

NOPE Antibody (monoclonal) (M03)

Mouse monoclonal antibody raised against a partial recombinant NOPE.

Catalog # AT3078a

Product Information

Application	WB
Primary Accession	Q8TDY8
Other Accession	NM_020962
Reactivity	Human
Host	mouse
Clonality	monoclonal
Isotype	IgG2a Kappa
Clone Names	6E7
Calculated MW	134210

Additional Information

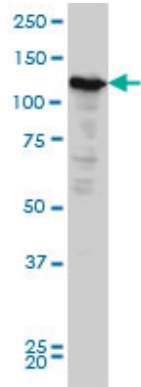
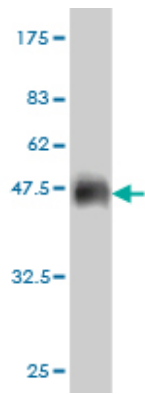
Gene ID	57722
Other Names	Immunoglobulin superfamily DCC subclass member 4, Neighbor of punc e11, Protein DDM36, hDDM36, IGDCC4, DDM36, KIAA1628, NOPE
Target/Specificity	NOPE (NP_066013, 1152 a.a. ~ 1250 a.a) partial recombinant protein with GST tag. MW of the GST tag alone is 26 KDa.
Dilution	WB~~1:500~1000
Format	Clear, colorless solution in phosphate buffered saline, pH 7.2 .
Storage	Store at -20°C or lower. Aliquot to avoid repeated freezing and thawing.
Precautions	NOPE Antibody (monoclonal) (M03) is for research use only and not for use in diagnostic or therapeutic procedures.

References

1.Neighbor of punc E11, a novel onco-fetal marker for hepatocellular carcinoma.Marquardt JU, Quasdorff M, Varnholt H, Curth HM, Mesghenna S, Protzer U, Goeser T, Nierhoff D.Int J Cancer. 2010 Jul 23. [Epub ahead of print]

Images

Antibody Reactive Against Recombinant Protein.Western Blot detection against Immunogen (36.63 KDa) .



NOPE monoclonal antibody (M03), clone 6E6 Western
Blot analysis of NOPE expression in HeLa ((Cat # AT3078a
)

Please note: All products are 'FOR RESEARCH USE ONLY. NOT FOR USE IN DIAGNOSTIC OR THERAPEUTIC PROCEDURES'.