

NPY1R Antibody (monoclonal) (M03)

Mouse monoclonal antibody raised against a partial recombinant NPY1R.

Catalog # AT3088a

Product Information

Application	WB, E
Primary Accession	P25929
Other Accession	BC036657
Reactivity	Human
Host	mouse
Clonality	monoclonal
Isotype	IgG2a Kappa
Clone Names	2G2
Calculated MW	44392

Additional Information

Gene ID	4886
Other Names	Neuropeptide Y receptor type 1, NPY1-R, NPY1R, NPYR, NPY1
Target/Specificity	NPY1R (AAH36657, 1 a.a. ~ 115 a.a) partial recombinant protein with GST tag. MW of the GST tag alone is 26 KDa.
Dilution	WB~~1:500~1000 E~~N/A
Format	Clear, colorless solution in phosphate buffered saline, pH 7.2 .
Storage	Store at -20°C or lower. Aliquot to avoid repeated freezing and thawing.
Precautions	NPY1R Antibody (monoclonal) (M03) is for research use only and not for use in diagnostic or therapeutic procedures.

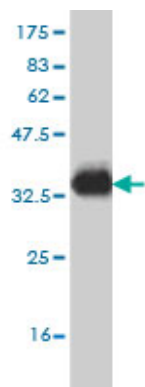
Background

Neuropeptide Y (NPY; MIM 162640) is one of the most abundant neuropeptides in the mammalian nervous system and exhibits a diverse range of important physiologic activities, including effects on psychomotor activity, food intake, regulation of central endocrine secretion, and potent vasoactive effects on the cardiovascular system. Two major subtypes of NPY (Y1 and Y2) have been defined by pharmacologic criteria. NPY receptors, such as NPY1R, have been identified in a variety of tissues, including brain, spleen, small intestine, kidney, testis, placenta, and aortic smooth muscle (Herzog et al., 1992 [PubMed 1321422]).

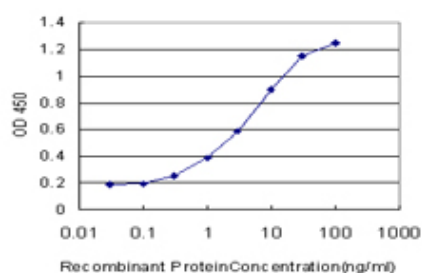
References

- 1.Neuropeptide Y and Neuropeptide Y Y5 Receptor Interaction Restores Impaired Growth Potential of Aging

Images



Antibody Reactive Against Recombinant Protein.Western Blot detection against Immunogen (38.39 KDa) .



Detection limit for recombinant GST tagged NPY1R is approximately 0.1ng/ml as a capture antibody.

Please note: All products are 'FOR RESEARCH USE ONLY. NOT FOR USE IN DIAGNOSTIC OR THERAPEUTIC PROCEDURES'.