

NR1D1 Antibody (monoclonal) (M02)

Mouse monoclonal antibody raised against a full length recombinant NR1D1.

Catalog # AT3093a

Product Information

Application	WB, IHC, IF, E
Primary Accession	P20393
Other Accession	BC056148
Reactivity	Human, Mouse
Host	mouse
Clonality	monoclonal
Isotype	IgG1 Kappa
Clone Names	4F6
Calculated MW	66805

Additional Information

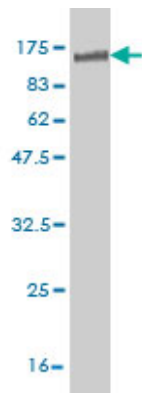
Gene ID	9572
Other Names	Nuclear receptor subfamily 1 group D member 1, Rev-erbA-alpha, V-erbA-related protein 1, EAR-1, NR1D1, EAR1, HREV, THRAL
Target/Specificity	NR1D1 (AAH56148, 1 a.a. ~ 614 a.a) full-length recombinant protein with GST tag. MW of the GST tag alone is 26 KDa.
Dilution	WB~~1:500~1000 IHC~~1:100~500 IF~~1:50~200 E~~N/A
Format	Clear, colorless solution in phosphate buffered saline, pH 7.2 .
Storage	Store at -20°C or lower. Aliquot to avoid repeated freezing and thawing.
Precautions	NR1D1 Antibody (monoclonal) (M02) is for research use only and not for use in diagnostic or therapeutic procedures.

References

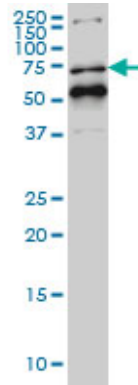
1.Clock-controlled output gene Dbp is a regulator of Arnt/Hif-1? gene expression in pancreatic islet ?-cells.Nakabayashi H, Ohta Y, Yamamoto M, Susuki Y, Taguchi A, Tanabe K, Kondo M, Hatanaka M, Nagao Y, Tanizawa YBiochem Biophys Res Commun. 2013 Apr 6. pii: S0006-291X(13)00548-2. doi: 10.1016/j.bbrc.2013.03.084.

Images

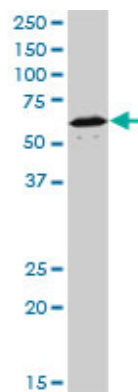
Antibody Reactive Against Recombinant Protein.Western



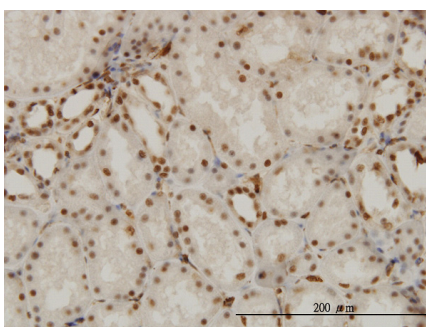
Blot detection against Immunogen (93.28 KDa) .



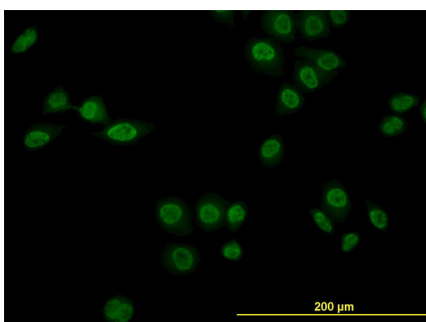
NR1D1 monoclonal antibody (M02), clone 4F6 Western Blot analysis of NR1D1 expression in Hela S3 NE ((Cat # AT3093a)



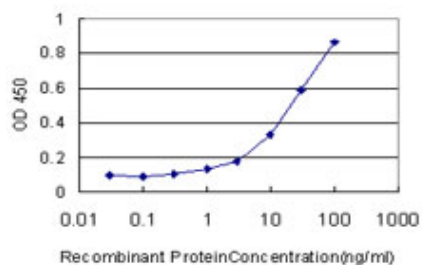
NR1D1 monoclonal antibody (M02), clone 4F6. Western Blot analysis of NR1D1 expression in NIH/3T3 ((Cat # AT3093a)



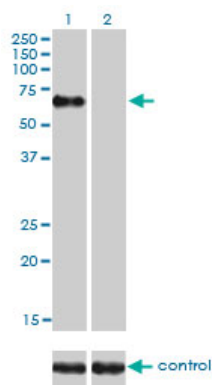
Immunoperoxidase of monoclonal antibody to NR1D1 on formalin-fixed paraffin-embedded human kidney. [antibody concentration 3 ug/ml]



Immunofluorescence of monoclonal antibody to NR1D1 on HeLa cell. [antibody concentration 10 ug/ml]



Detection limit for recombinant GST tagged NR1D1 is approximately 1 ng/ml as a capture antibody.



Western blot analysis of NR1D1 over-expressed 293 cell line, cotransfected with NR1D1 Validated Chimera RNAi (Cat # AT3093a)

Citations

- [Increased atherosclerotic lesions in LDL receptor deficient mice with hematopoietic nuclear receptor Rev-erbα knock-down.](#)

Please note: All products are 'FOR RESEARCH USE ONLY. NOT FOR USE IN DIAGNOSTIC OR THERAPEUTIC PROCEDURES'.