

NR1D1 Antibody (monoclonal) (M05)

Mouse monoclonal antibody raised against a full length recombinant NR1D1.

Catalog # AT3094a

Product Information

Application	WB, E
Primary Accession	P20393
Other Accession	BC056148
Reactivity	Human
Host	mouse
Clonality	monoclonal
Isotype	IgG3 Kappa
Clone Names	5H6
Calculated MW	66805

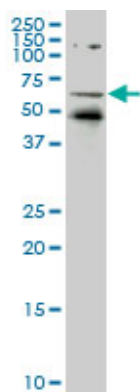
Additional Information

Gene ID	9572
Other Names	Nuclear receptor subfamily 1 group D member 1, Rev-erbA-alpha, V-erbA-related protein 1, EAR-1, NR1D1, EAR1, HREV, THRAL
Target/Specificity	NR1D1 (AAH56148, 1 a.a. ~ 614 a.a) full-length recombinant protein with GST tag. MW of the GST tag alone is 26 KDa.
Dilution	WB~~1:500~1000 E~~N/A
Format	Clear, colorless solution in phosphate buffered saline, pH 7.2 .
Storage	Store at -20°C or lower. Aliquot to avoid repeated freezing and thawing.
Precautions	NR1D1 Antibody (monoclonal) (M05) is for research use only and not for use in diagnostic or therapeutic procedures.

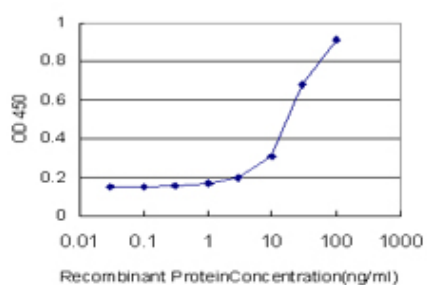
References

Variation at the NFATC2 Locus Increases the Risk of Thiazolinedinedione-Induced Edema in the Diabetes REduction Assessment with ramipril and rosiglitazone Medication (DREAM) Study. Bailey SD, et al. Diabetes Care, 2010 Jul 13. PMID 20628086. Structure of Rev-erbalpha bound to N-CoR reveals a unique mechanism of nuclear receptor-co-repressor interaction. Phelan CA, et al. Nat Struct Mol Biol, 2010 Jul. PMID 20581824. E3 ligases Arf-bp1 and Pam mediate lithium-stimulated degradation of the circadian heme receptor Rev-erb alpha. Yin L, et al. Proc Natl Acad Sci U S A, 2010 Jun 22. PMID 20534529. Genotyping sleep disorders patients. Kripke DF, et al. Psychiatry Investig, 2010 Mar. PMID 20396431. Nuclear receptor rev-erb-{alpha} circadian gene variants and lithium carbonate prophylaxis in bipolar affective disorder. Campos-de-Sousa S, et al. J Biol Rhythms, 2010 Apr. PMID 20348464.

Images



NR1D1 monoclonal antibody (M05), clone 5H6 Western Blot analysis of NR1D1 expression in HeLa S3 NE (Cat # L013V3).



Detection limit for recombinant GST tagged NR1D1 is approximately 3ng/ml as a capture antibody.

Please note: All products are 'FOR RESEARCH USE ONLY. NOT FOR USE IN DIAGNOSTIC OR THERAPEUTIC PROCEDURES'.