

NR1H2 Antibody (monoclonal) (M04)

Mouse monoclonal antibody raised against a full length recombinant NR1H2.

Catalog # AT3097a

Product Information

Application	WB, IF, E
Primary Accession	P55055
Other Accession	BC007790
Reactivity	Human, Rat
Host	mouse
Clonality	monoclonal
Isotype	IgG2a Kappa
Clone Names	10
Calculated MW	50974

Additional Information

Gene ID	7376
Other Names	Oxysterols receptor LXR-beta, Liver X receptor beta, Nuclear receptor NER, Nuclear receptor subfamily 1 group H member 2, Ubiquitously-expressed nuclear receptor, NR1H2, LXRβ, NER, UNR
Target/Specificity	NR1H2 (AAH07790.1, 1 a.a. ~ 461 a.a) full-length recombinant protein with GST tag. MW of the GST tag alone is 26 KDa.
Dilution	WB~~1:500~1000 IF~~1:50~200 E~~N/A
Format	Clear, colorless solution in phosphate buffered saline, pH 7.2 .
Storage	Store at -20°C or lower. Aliquot to avoid repeated freezing and thawing.
Precautions	NR1H2 Antibody (monoclonal) (M04) is for research use only and not for use in diagnostic or therapeutic procedures.

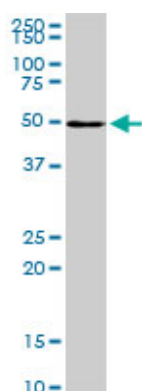
Background

The liver X receptors, LXRA (NR1H3; MIM 602423) and LXRβ, form a subfamily of the nuclear receptor superfamily and are key regulators of macrophage function, controlling transcriptional programs involved in lipid homeostasis and inflammation. The inducible LXRA is highly expressed in liver, adrenal gland, intestine, adipose tissue, macrophages, lung, and kidney, whereas LXRβ is ubiquitously expressed. Ligand-activated LXRs form obligate heterodimers with retinoid X receptors (RXRs; see MIM 180245) and regulate expression of target genes containing LXR response elements (summary by Korf et al., 2009 [PubMed 19436111]).

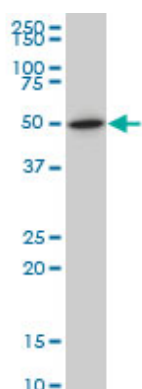
References

Variation at the NFATC2 Locus Increases the Risk of Thiazolinedinedione-Induced Edema in the Diabetes REduction Assessment with ramipril and rosiglitazone Medication (DREAM) Study. Bailey SD, et al. Diabetes Care, 2010 Jul 13. PMID 20628086. LXR activation inhibits chemokine-induced CD4-positive lymphocyte migration. Walcher D, et al. Basic Res Cardiol, 2010 Jul. PMID 20364260. Regulation of thyroid hormone activation via the liver X-receptor/retinoid X-receptor pathway. Christoffolete MA, et al. J Endocrinol, 2010 May. PMID 20176747. GPS2-dependent corepressor/SUMO pathways govern anti-inflammatory actions of LRH-1 and LXRBeta in the hepatic acute phase response. Venteclef N, et al. Genes Dev, 2010 Feb 15. PMID 20159957. Integrative predictive model of coronary artery calcification in atherosclerosis. McGeachie M, et al. Circulation, 2009 Dec 15. PMID 19948975.

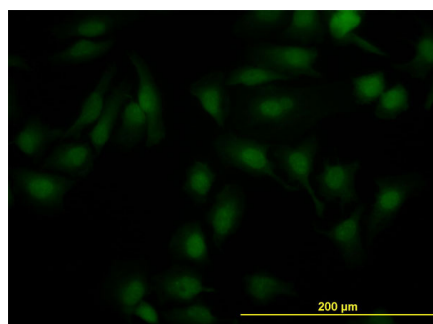
Images



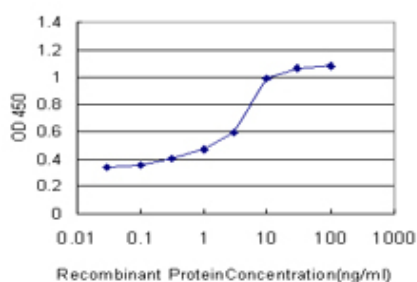
NR1H2 monoclonal antibody (M04), clone 1E1. Western Blot analysis of NR1H2 expression in PC-12 (Cat # L012V1).



NR1H2 monoclonal antibody (M04), clone 1E1 Western Blot analysis of NR1H2 expression in IMR-32 (Cat # AT3097a)



Immunofluorescence of monoclonal antibody to NR1H2 on HeLa cell. [antibody concentration 10 ug/ml]



Detection limit for recombinant GST tagged NR1H2 is approximately 0.03ng/ml as a capture antibody.

Please note: All products are 'FOR RESEARCH USE ONLY. NOT FOR USE IN DIAGNOSTIC OR THERAPEUTIC PROCEDURES'.