

NR2E1 Antibody (monoclonal) (M01)

Mouse monoclonal antibody raised against a partial recombinant NR2E1.

Catalog # AT3101a

Product Information

Application	WB
Primary Accession	Q9Y466
Other Accession	NM_003269
Reactivity	Human, Mouse
Host	mouse
Clonality	monoclonal
Isotype	IgG2a Kappa
Clone Names	1C4
Calculated MW	42589

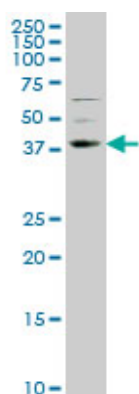
Additional Information

Gene ID	7101
Other Names	Nuclear receptor subfamily 2 group E member 1, Nuclear receptor TLX, Protein tailless homolog, TII, hTII, NR2E1, TLX
Target/Specificity	NR2E1 (NP_003260, 249 a.a. ~ 342 a.a) partial recombinant protein with GST tag. MW of the GST tag alone is 26 KDa.
Dilution	WB~~1:500~1000
Format	Clear, colorless solution in phosphate buffered saline, pH 7.2 .
Storage	Store at -20°C or lower. Aliquot to avoid repeated freezing and thawing.
Precautions	NR2E1 Antibody (monoclonal) (M01) is for research use only and not for use in diagnostic or therapeutic procedures.

References

The nuclear receptor tailless induces long-term neural stem cell expansion and brain tumor initiation. Liu HK, et al. Genes Dev, 2010 Apr 1. PMID 20360385. Transcriptional activation of NAD⁺-dependent protein deacetylase SIRT1 by nuclear receptor TLX. Iwahara N, et al. Biochem Biophys Res Commun, 2009 Sep 4. PMID 19555662. A common variant in DRD3 receptor is associated with autism spectrum disorder. de Krom M, et al. Biol Psychiatry, 2009 Apr 1. PMID 19058789. Transrepressive function of TLX requires the histone demethylase LSD1. Yokoyama A, et al. Mol Cell Biol, 2008 Jun. PMID 18391013. Initial association of NR2E1 with bipolar disorder and identification of candidate mutations in bipolar disorder, schizophrenia, and aggression through resequencing. Kumar RA, et al. Am J Med Genet B Neuropsychiatr Genet, 2008 Sep 5. PMID 18205168.

Images



NR2E1 monoclonal antibody (M01), clone 1C4 Western Blot analysis of NR2E1 expression in NIH/3T3 (Cat # L018V1).

Please note: All products are 'FOR RESEARCH USE ONLY. NOT FOR USE IN DIAGNOSTIC OR THERAPEUTIC PROCEDURES'.