

# NRBP1 Antibody (monoclonal) (M01)

Mouse monoclonal antibody raised against a partial recombinant NRBP1.

Catalog # AT3112a

## Product Information

---

<b>Application</b>	WB, IF
<b>Primary Accession</b>	<a href="#">Q9UHY1</a>
<b>Other Accession</b>	<a href="#">BC001221</a>
<b>Reactivity</b>	Human
<b>Host</b>	mouse
<b>Clonality</b>	monoclonal
<b>Isotype</b>	IgG2a Kappa
<b>Clone Names</b>	4D2
<b>Calculated MW</b>	59845

## Additional Information

---

<b>Gene ID</b>	29959
<b>Other Names</b>	Nuclear receptor-binding protein, NRBP1, BCON3 {ECO:0000312 EMBL:AAF219671}, NRBP
<b>Target/Specificity</b>	NRBP1 (AAH01221, 436 a.a. ~ 535 a.a) partial recombinant protein with GST tag. MW of the GST tag alone is 26 KDa.
<b>Dilution</b>	WB~~1:500~1000 IF~~1:50~200
<b>Format</b>	Clear, colorless solution in phosphate buffered saline, pH 7.2 .
<b>Storage</b>	Store at -20°C or lower. Aliquot to avoid repeated freezing and thawing.
<b>Precautions</b>	NRBP1 Antibody (monoclonal) (M01) is for research use only and not for use in diagnostic or therapeutic procedures.

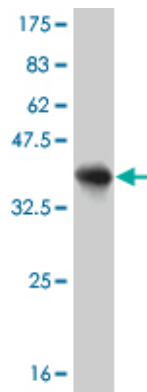
## References

---

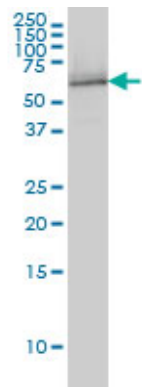
Large-scale mapping of human protein-protein interactions by mass spectrometry. Ewing RM, et al. Mol Syst Biol, 2007. PMID 17353931. Adapter protein NRBP associates with Jab1 and negatively regulates AP-1 activity. Wang H, et al. FEBS Lett, 2006 Oct 30. PMID 17052710. A probability-based approach for high-throughput protein phosphorylation analysis and site localization. Beausoleil SA, et al. Nat Biotechnol, 2006 Oct. PMID 16964243. Towards a proteome-scale map of the human protein-protein interaction network. Rual JF, et al. Nature, 2005 Oct 20. PMID 16189514. A human protein-protein interaction network: a resource for annotating the proteome. Stelzl U, et al. Cell, 2005 Sep 23. PMID 16169070.

## Images

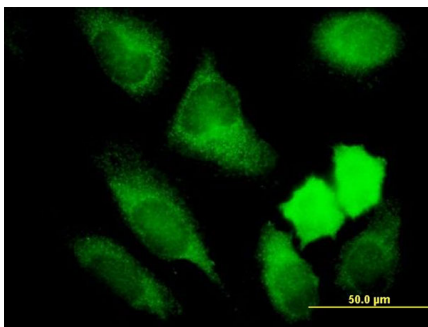
---



Antibody Reactive Against Recombinant Protein. Western Blot detection against Immunogen (36.63 KDa) .



NRBP monoclonal antibody (M01), clone 4D2 Western Blot analysis of NRBP expression in HL-60 ( (Cat # AT3112a )



Immunofluorescence of monoclonal antibody to NRBP1 on HeLa cell. [antibody concentration 10 ug/ml]

Please note: All products are 'FOR RESEARCH USE ONLY. NOT FOR USE IN DIAGNOSTIC OR THERAPEUTIC PROCEDURES'.