

NSDHL Antibody (monoclonal) (M01)

Mouse monoclonal antibody raised against a partial recombinant NSDHL.

Catalog # AT3118a

Product Information

Application	WB, E
Primary Accession	Q15738
Other Accession	NM_015922
Reactivity	Human, Mouse, Rat
Host	mouse
Clonality	monoclonal
Isotype	IgG2a Kappa
Clone Names	6E4
Calculated MW	41900

Additional Information

Gene ID	50814
Other Names	Sterol-4-alpha-carboxylate 3-dehydrogenase, decarboxylating, Protein H105e3, NSDHL, H105E3
Target/Specificity	NSDHL (NP_057006, 1 a.a. ~ 110 a.a) partial recombinant protein with GST tag. MW of the GST tag alone is 26 KDa.
Dilution	WB~~1:500~1000 E~~N/A
Format	Clear, colorless solution in phosphate buffered saline, pH 7.2 .
Storage	Store at -20°C or lower. Aliquot to avoid repeated freezing and thawing.
Precautions	NSDHL Antibody (monoclonal) (M01) is for research use only and not for use in diagnostic or therapeutic procedures.

Background

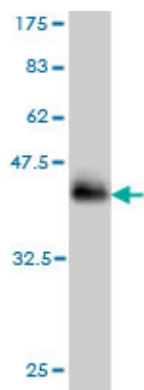
The protein encoded by this gene is localized in the endoplasmic reticulum and is involved in cholesterol biosynthesis. Mutations in this gene are associated with CHILD syndrome, which is a X-linked dominant disorder of lipid metabolism with disturbed cholesterol biosynthesis, and typically lethal in males. Alternatively spliced transcript variants with differing 5' UTR have been found for this gene.

References

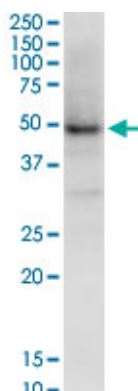
Genetic variation in 3-hydroxy-3-methylglutaryl CoA reductase modifies the chemopreventive activity of statins for colorectal cancer. Lipkin SM, et al. Cancer Prev Res (Phila), 2010 May. PMID 20403997. Significant

contributions of the extraembryonic membranes and maternal genotype to the placental pathology in heterozygous Nsdhl deficient female embryos. Cunningham D, et al. Hum Mol Genet, 2010 Jan 15. PMID 19880419. The SDR (short-chain dehydrogenase/reductase and related enzymes) nomenclature initiative. Persson B, et al. Chem Biol Interact, 2009 Mar 16. PMID 19027726. Multiple genetic variants along candidate pathways influence plasma high-density lipoprotein cholesterol concentrations. Lu Y, et al. J Lipid Res, 2008 Dec. PMID 18660489. Toward a confocal subcellular atlas of the human proteome. Barbe L, et al. Mol Cell Proteomics, 2008 Mar. PMID 18029348.

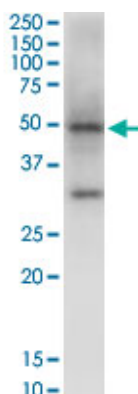
Images



Antibody Reactive Against Recombinant Protein. Western Blot detection against Immunogen (37.84 KDa) .

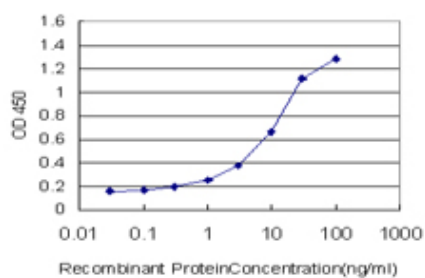
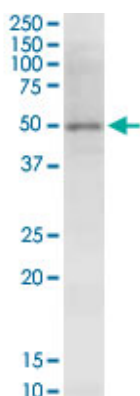


NSDHL monoclonal antibody (M01), clone 6E3. Western Blot analysis of NSDHL expression in PC-12.



NSDHL monoclonal antibody (M01), clone 6E3. Western Blot analysis of NSDHL expression in Raw 264.7.

NSDHL monoclonal antibody (M01), clone 6E3. Western Blot analysis of NSDHL expression in A-431.



Detection limit for recombinant GST tagged NSDHL is approximately 0.1 ng/ml as a capture antibody.

Please note: All products are 'FOR RESEARCH USE ONLY. NOT FOR USE IN DIAGNOSTIC OR THERAPEUTIC PROCEDURES'.