

NSEP1 Antibody (monoclonal) (M01)

Mouse monoclonal antibody raised against a partial recombinant YBX1.

Catalog # AT3119a

Product Information

Application	WB, IF, E
Primary Accession	P67809
Other Accession	NM_004559
Reactivity	Human
Host	Mouse
Clonality	monoclonal
Isotype	IgG2a Kappa
Clone Names	4F12
Calculated MW	35924

Additional Information

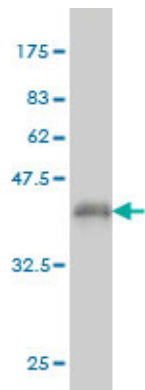
Gene ID	4904
Other Names	Nuclease-sensitive element-binding protein 1, CCAAT-binding transcription factor I subunit A, CBF-A, DNA-binding protein B, DBPB, Enhancer factor I subunit A, EFI-A, Y-box transcription factor, Y-box-binding protein 1, YB-1, YBX1, NSEP1, YB1
Target/Specificity	YBX1 (NP_004550, 51 a.a. ~ 139 a.a) partial recombinant protein with GST tag. MW of the GST tag alone is 26 KDa.
Dilution	WB~~1:500~1000 IF~~1:50~200 E~~N/A
Format	Clear, colorless solution in phosphate buffered saline, pH 7.2 .
Storage	Store at -20°C or lower. Aliquot to avoid repeated freezing and thawing.
Precautions	NSEP1 Antibody (monoclonal) (M01) is for research use only and not for use in diagnostic or therapeutic procedures.

References

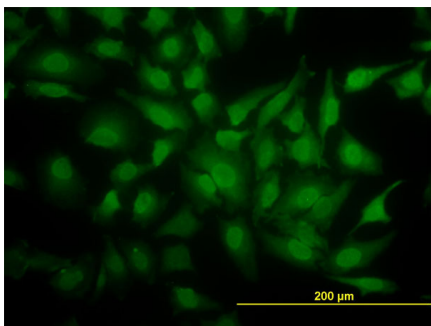
YB-1 alters MT1-MMP trafficking and stimulates MCF-7 breast tumor invasion and metastasis. Lovett DH, et al. Biochem Biophys Res Commun, 2010 Jul 30. PMID 20599698.Y-box binding protein-1 is a novel molecular target for tumor vessels. Takahashi M, et al. Cancer Sci, 2010 Jun. PMID 20398058.Y-box binding protein-1 induces the expression of CD44 and CD49f leading to enhanced self-renewal, mammosphere growth, and drug resistance. To K, et al. Cancer Res, 2010 Apr 1. PMID 20332234.Upregulated c-myc expression in multiple myeloma by internal ribosome entry results from increased interactions with and expression of PTB-1 and YB-1. Cobbold LC, et al. Oncogene, 2010 May 13. PMID 20190818.[Effect of YB-1 gene knockdown

on human leukemia cell line K562/A02] Xu WL, et al. Zhonghua Yi Xue Yi Chuan Xue Za Zhi, 2009 Aug. PMID 20017303.

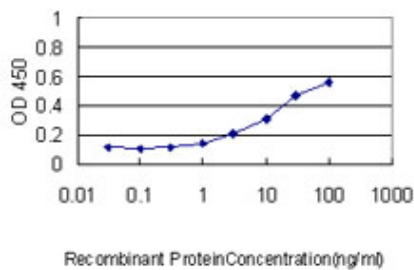
Images



Antibody Reactive Against Recombinant Protein.Western Blot detection against Immunogen (35.53 KDa) .



Immunofluorescence of monoclonal antibody to YBX1 on HeLa cell. [antibody concentration 20 ug/ml]



Detection limit for recombinant GST tagged YBX1 is approximately 0.3ng/ml as a capture antibody.

Please note: All products are 'FOR RESEARCH USE ONLY. NOT FOR USE IN DIAGNOSTIC OR THERAPEUTIC PROCEDURES'.