

NUDC Antibody (monoclonal) (M01)

Mouse monoclonal antibody raised against a full length recombinant NUDC.

Catalog # AT3125a

Product Information

Application	WB, IF, E
Primary Accession	Q9Y266
Other Accession	BC002399
Reactivity	Human
Host	mouse
Clonality	monoclonal
Isotype	IgG1 Kappa
Clone Names	5G12
Calculated MW	38243

Additional Information

Gene ID	10726
Other Names	Nuclear migration protein nudC, Nuclear distribution protein C homolog, NUDC
Target/Specificity	NUDC (AAH02399, 1 a.a. ~ 331 a.a) full-length recombinant protein with GST tag. MW of the GST tag alone is 26 KDa.
Dilution	WB~~1:500~1000 IF~~1:50~200 E~~N/A
Format	Clear, colorless solution in phosphate buffered saline, pH 7.2 .
Storage	Store at -20°C or lower. Aliquot to avoid repeated freezing and thawing.
Precautions	NUDC Antibody (monoclonal) (M01) is for research use only and not for use in diagnostic or therapeutic procedures.

Background

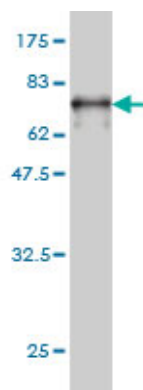
NudC was first identified as a regulator of nuclear movement in the asexual reproductive cycle of the filamentous fungus *Aspergillus nidulans*. Human NUDC is a nuclear movement protein that associates with dynein (see DYNC1H1; MIM 600112) (Aumais et al., 2003 [PubMed 12679384]).

References

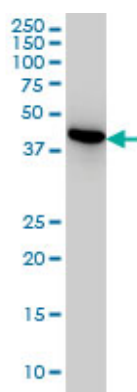
Defining the human deubiquitinating enzyme interaction landscape. Sowa ME, et al. Cell, 2009 Jul 23. PMID 19615732. Interference RNA (RNAi)-based silencing of endogenous thrombopoietin receptor (Mpl) in Dami cells resulted in decreased hNUDC-mediated megakaryocyte proliferation and differentiation. Pang SF, et al.

Exp Cell Res, 2009 Dec 10. PMID 19560457.hNUDC promotes the cell proliferation and differentiation in a leukemic cell line via activation of the thrombopoietin receptor (Mpl). Tang YS, et al. Leukemia, 2008 May. PMID 18288130.Regulation of cell differentiation by hNUDC via a Mpl-dependent mechanism in NIH 3T3 cells. Zhang YP, et al. Exp Cell Res, 2007 Sep 10. PMID 17658515.Large-scale mapping of human protein-protein interactions by mass spectrometry. Ewing RM, et al. Mol Syst Biol, 2007. PMID 17353931.

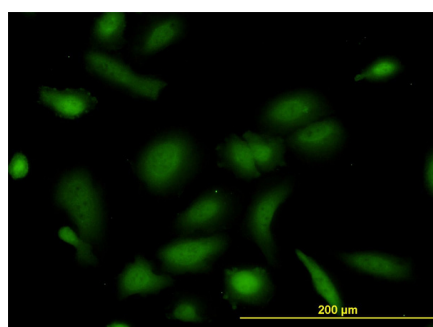
Images



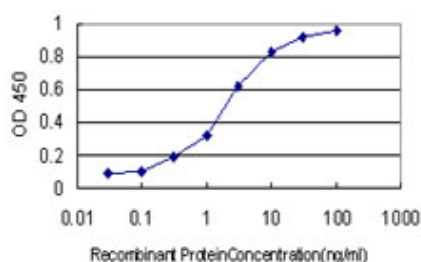
Antibody Reactive Against Recombinant Protein.Western Blot detection against Immunogen (62.15 KDa) .



NUDC monoclonal antibody (M01), clone 5G12 Western Blot analysis of NUDC expression in HeLa ((Cat # AT3125a)



Immunofluorescence of monoclonal antibody to NUDC on HeLa cell. [antibody concentration 10 ug/ml]



Detection limit for recombinant GST tagged NUDC is approximately 0.03ng/ml as a capture antibody.

Citations

- [Key proteins of proteome underlying sperm malformation of rats exposed to low fenvalerate doses are highly related](#)

[to P53](#)

- [WIPI3 and WIPI4 \$\beta\$ -propellers are scaffolds for LKB1-AMPK-TSC signalling circuits in the control of autophagy.](#)

Please note: All products are 'FOR RESEARCH USE ONLY. NOT FOR USE IN DIAGNOSTIC OR THERAPEUTIC PROCEDURES'.