

NUMA1 Antibody (monoclonal) (M01)

Mouse monoclonal antibody raised against a partial recombinant NUMA1.

Catalog # AT3134a

Product Information

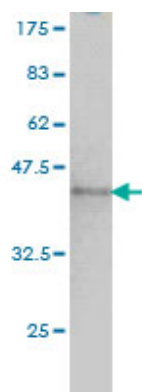
Application	WB, IP, E
Primary Accession	Q14980
Other Accession	NM_006185
Reactivity	Human
Host	mouse
Clonality	monoclonal
Isotype	IgG1 Kappa
Clone Names	1C5
Calculated MW	238260

Additional Information

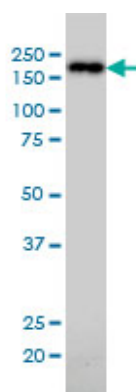
Gene ID	4926
Other Names	Nuclear mitotic apparatus protein 1 {ECO:0000312 HGNC:HGNC:8059}, NuMA protein, Nuclear matrix protein-22, NMP-22, SP-H antigen, NUMA1 (HGNC:8059)
Target/Specificity	NUMA1 (NP_006176, 200 a.a. ~ 306 a.a) partial recombinant protein with GST tag. MW of the GST tag alone is 26 KDa.
Dilution	WB~~1:500~1000 IP~~N/A E~~N/A
Format	Clear, colorless solution in phosphate buffered saline, pH 7.2 .
Storage	Store at -20°C or lower. Aliquot to avoid repeated freezing and thawing.
Precautions	NUMA1 Antibody (monoclonal) (M01) is for research use only and not for use in diagnostic or therapeutic procedures.

References

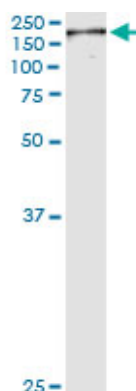
Centrosome-related genes, genetic variation, and risk of breast cancer. Olson JE, et al. Breast Cancer Res Treat, 2010 May 28. PMID 20508983. Ric-8A and Gi alpha recruit LGN, NuMA, and dynein to the cell cortex to help orient the mitotic spindle. Woodard GE, et al. Mol Cell Biol, 2010 Jul. PMID 20479129. Personalized smoking cessation: interactions between nicotine dose, dependence and quit-success genotype score. Rose JE, et al. Mol Med, 2010 Jul-Aug. PMID 20379614. Interaction between Poly(ADP-ribose) and NuMA contributes to mitotic spindle pole assembly. Chang P, et al. Mol Biol Cell, 2009 Nov. PMID 19759176. Inhibiting Crm1 causes the formation of excess acentriolar spindle poles containing NuMA and B23, but does not affect centrosome numbers. Rousselet A. Biol Cell, 2009 Sep 14. PMID 19522705.



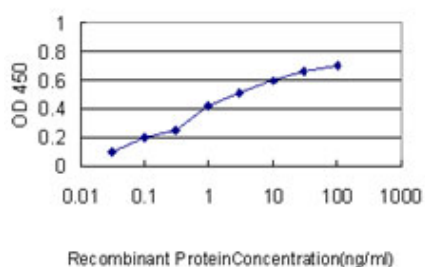
Antibody Reactive Against Recombinant Protein. Western Blot detection against Immunogen (37.51 KDa) .



NUMA1 monoclonal antibody (M01), clone 1C5 Western Blot analysis of NUMA1 expression in K-562 ((Cat # AT3134a)



Immunoprecipitation of NUMA1 transfected lysate using anti-NUMA1 monoclonal antibody and Protein A Magnetic Bead ([U0007](#)), and immunoblotted with NUMA1 MaxPab rabbit polyclonal antibody.



Detection limit for recombinant GST tagged NUMA1 is approximately 0.1ng/ml as a capture antibody.

Please note: All products are 'FOR RESEARCH USE ONLY. NOT FOR USE IN DIAGNOSTIC OR THERAPEUTIC PROCEDURES'.