

OBFC1 Antibody (monoclonal) (M01)

Mouse monoclonal antibody raised against a full length recombinant OBFC1.

Catalog # AT3142a

Product Information

Application	WB
Primary Accession	Q9H668
Other Accession	BC017400
Reactivity	Human
Host	mouse
Clonality	monoclonal
Isotype	IgG2a kappa
Clone Names	3G12-1B7
Calculated MW	42119

Additional Information

Gene ID	79991
Other Names	CST complex subunit STN1, Oligonucleotide/oligosaccharide-binding fold-containing protein 1, Suppressor of cdc thirteen homolog, OBFC1, STN1
Target/Specificity	OBFC1 (AAH17400, 1 a.a. ~ 368 a.a) full-length recombinant protein with GST tag. MW of the GST tag alone is 26 KDa.
Dilution	WB~~1:500~1000
Format	Clear, colorless solution in phosphate buffered saline, pH 7.2 .
Storage	Store at -20°C or lower. Aliquot to avoid repeated freezing and thawing.
Precautions	OBFC1 Antibody (monoclonal) (M01) is for research use only and not for use in diagnostic or therapeutic procedures.

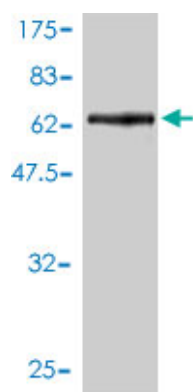
Background

OBFC1 and C17ORF68 (MIM 613129) are subunits of an alpha accessory factor (AAF) that stimulates the activity of DNA polymerase-alpha-primase (see MIM 176636), the enzyme that initiates DNA replication (Casteel et al., 2009 [PubMed 19119139]). OBFC1 also appears to function in a telomere-associated complex with C17ORF68 and TEN1 (C17ORF106; MIM 613130) (Miyake et al., 2009 [PubMed 19854130]).

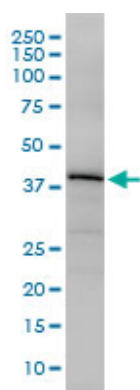
References

1.OB Fold-containing Protein 1 (OBFC1), a Human Homolog of Yeast Stn1, Associates with TPP1 and Is Implicated in Telomere Length Regulation.Wan M, Qin J, Songyang Z, Liu D.J Biol Chem. 2009 Sep

Images



Antibody Reactive Against Recombinant Protein. Western Blot detection against Immunogen (66.22 KDa) .



OBFC1 monoclonal antibody (M01), clone 3G12-1B7
Western Blot analysis of OBFC1 expression in Jurkat ((Cat # AT3142a)

Please note: All products are 'FOR RESEARCH USE ONLY. NOT FOR USE IN DIAGNOSTIC OR THERAPEUTIC PROCEDURES'.