

OCRL Antibody (monoclonal) (M02)

Mouse monoclonal antibody raised against a partial recombinant OCRL.

Catalog # AT3144a

Product Information

Application	WB, IHC, E
Primary Accession	Q01968
Other Accession	NM_000276
Reactivity	Human
Host	mouse
Clonality	monoclonal
Isotype	IgG2a Kappa
Clone Names	4A6
Calculated MW	104205

Additional Information

Gene ID	4952
Other Names	Inositol polyphosphate 5-phosphatase OCRL-1, Lowe oculocerebrorenal syndrome protein, OCRL, INPP5F, OCRL1
Target/Specificity	OCRL (NP_000267, 146 a.a. ~ 239 a.a) partial recombinant protein with GST tag. MW of the GST tag alone is 26 KDa.
Dilution	WB~~1:500~1000 IHC~~1:100~500 E~~N/A
Format	Clear, colorless solution in phosphate buffered saline, pH 7.2 .
Storage	Store at -20°C or lower. Aliquot to avoid repeated freezing and thawing.
Precautions	OCRL Antibody (monoclonal) (M02) is for research use only and not for use in diagnostic or therapeutic procedures.

Background

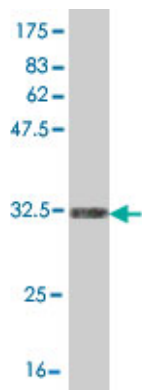
This gene encodes a phosphatase enzyme that is involved in actin polymerization and is found in the trans-Golgi network. Mutations in this gene cause oculocerebrorenal syndrome of Lowe and also Dent disease.

References

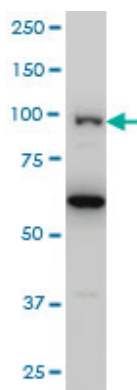
Two closely related endocytic proteins that share a common OCRL-binding motif with APPL1. Swan LE, et al. Proc Natl Acad Sci U S A, 2010 Feb 23. PMID 20133602. Development of a multiplex ligation-dependent probe amplification (MLPA) assay for quantification of the OCRL1 gene. Coutton C, et al. Clin Biochem, 2010 Apr.

PMID 20043897.OCRL1 function in renal epithelial membrane traffic. Cui S, et al. Am J Physiol Renal Physiol, 2010 Feb. PMID 19940034.Lowe syndrome patient fibroblasts display Ocr11-specific cell migration defects that cannot be rescued by the homologous Inpp5b phosphatase. Coon BG, et al. Hum Mol Genet, 2009 Dec 1. PMID 19700499.Locus heterogeneity of Dent's disease: OCRL1 and TMEM27 genes in patients with no CLCN5 mutations. Tosetto E, et al. Pediatr Nephrol, 2009 Oct. PMID 19582483.

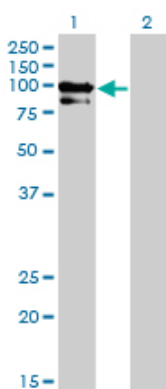
Images



Antibody Reactive Against Recombinant Protein. Western Blot detection against Immunogen (36.08 KDa) .

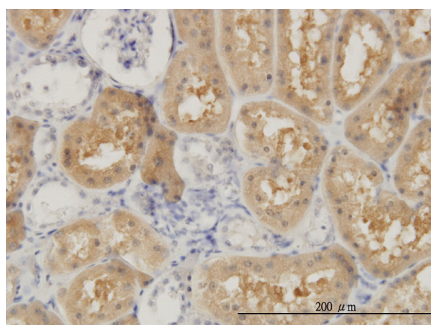


OCRL monoclonal antibody (M02), clone 4A6 Western Blot analysis of OCRL expression in HeLa S3 NE (Cat # AT3144a)



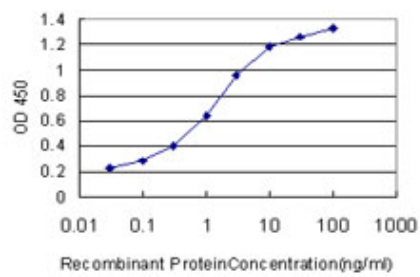
Western Blot analysis of OCRL expression in transfected 293T cell line by OCRL monoclonal antibody (M02), clone 4A6.

Lane 1: OCRL transfected lysate(103.2 KDa).
Lane 2: Non-transfected lysate.

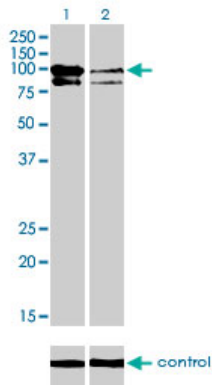


Immunoperoxidase of monoclonal antibody to OCRL on formalin-fixed paraffin-embedded human kidney. [antibody concentration 3 ug/ml]

Detection limit for recombinant GST tagged OCRL is



approximately 0.1ng/ml as a capture antibody.



Western blot analysis of OCRL over-expressed 293 cell line, cotransfected with OCRL Validated Chimera RNAi (Cat # AT3144a)

Please note: All products are 'FOR RESEARCH USE ONLY. NOT FOR USE IN DIAGNOSTIC OR THERAPEUTIC PROCEDURES'.