

OTX1 Antibody (monoclonal) (M01)

Mouse monoclonal antibody raised against a partial recombinant OTX1.

Catalog # AT3159a

Product Information

Application	WB, IF, E
Primary Accession	P32242
Other Accession	NM_014562
Reactivity	Human
Host	mouse
Clonality	monoclonal
Isotype	IgG2a Kappa
Clone Names	1F2
Calculated MW	37327

Additional Information

Gene ID	5013
Other Names	Homeobox protein OTX1, Orthodenticle homolog 1, OTX1
Target/Specificity	OTX1 (NP_055377, 10 a.a. ~ 116 a.a) partial recombinant protein with GST tag. MW of the GST tag alone is 26 KDa.
Dilution	WB~~1:500~1000 IF~~1:50~200 E~~N/A
Format	Clear, colorless solution in phosphate buffered saline, pH 7.2 .
Storage	Store at -20°C or lower. Aliquot to avoid repeated freezing and thawing.
Precautions	OTX1 Antibody (monoclonal) (M01) is for research use only and not for use in diagnostic or therapeutic procedures.

Background

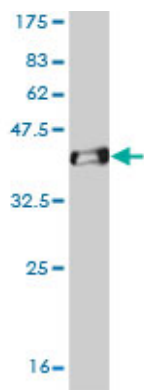
This gene encodes a member of the bicoid sub-family of homeodomain-containing transcription factors. The encoded protein acts as a transcription factor and may play a role in brain and sensory organ development. A similar protein in mice is required for proper brain and sensory organ development and can cause epilepsy.

References

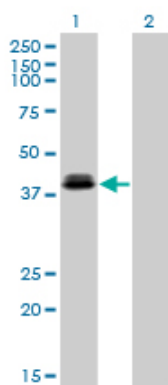
Expression of the homeobox genes OTX2 and OTX1 in the early developing human brain. Larsen KB, et al. J Histochem Cytochem, 2010 Jul. PMID 20354145. Expression of the brain transcription factor OTX1 occurs in a subset of normal germinal-center B cells and in aggressive Non-Hodgkin Lymphoma. Omodei D, et al. Am J

Pathol, 2009 Dec. PMID 19893048. Identification of seven new prostate cancer susceptibility loci through a genome-wide association study. Eeles RA, et al. Nat Genet, 2009 Oct. PMID 19767753. Shifted Transversal Design smart-pooling for high coverage interactome mapping. Xin X, et al. Genome Res, 2009 Jul. PMID 19447967. Expression of the homeobox genes PAX6, OTX2, and OTX1 in the early human fetal retina. Larsen KB, et al. Int J Dev Neurosci, 2009 Aug. PMID 19414065.

Images

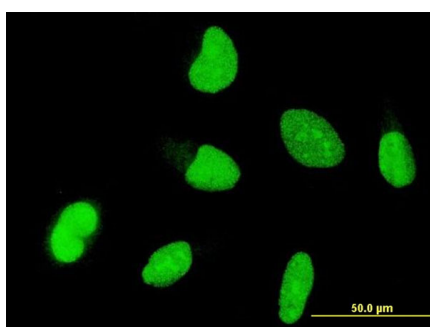


Antibody Reactive Against Recombinant Protein. Western Blot detection against Immunogen (37.51 kDa).

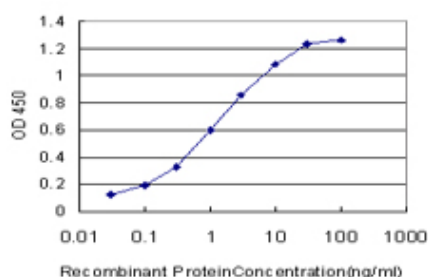


Western Blot analysis of OTX1 expression in transfected 293T cell line by OTX1 monoclonal antibody (M01), clone 1F2.

Lane 1: OTX1 transfected lysate (37.3 kDa).
Lane 2: Non-transfected lysate.

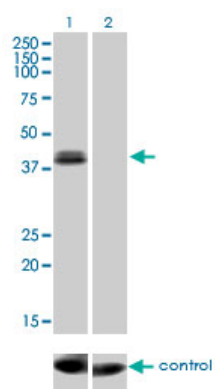


Immunofluorescence of monoclonal antibody to OTX1 on HeLa cell. [antibody concentration 10 μg/ml]



Detection limit for recombinant GST tagged OTX1 is approximately 0.03 ng/ml as a capture antibody.

Western blot analysis of OTX1 over-expressed 293 cell line, cotransfected with OTX1 Validated Chimera RNAi (Cat # AT3159a)



Please note: All products are 'FOR RESEARCH USE ONLY. NOT FOR USE IN DIAGNOSTIC OR THERAPEUTIC PROCEDURES'.