

# OXSR1 Antibody (monoclonal) (M16)

Mouse monoclonal antibody raised against a full length recombinant OXSR1.

Catalog # AT3162a

## Product Information

---

<b>Application</b>	WB, IHC, IF, E
<b>Primary Accession</b>	<a href="#">O95747</a>
<b>Other Accession</b>	<a href="#">BC008726.1</a>
<b>Reactivity</b>	Human, Mouse, Rat
<b>Host</b>	mouse
<b>Clonality</b>	monoclonal
<b>Isotype</b>	IgG2a Kappa
<b>Clone Names</b>	3A8
<b>Calculated MW</b>	58022

## Additional Information

---

<b>Gene ID</b>	9943
<b>Other Names</b>	Serine/threonine-protein kinase OSR1, Oxidative stress-responsive 1 protein, OXSR1 ( <a href="#">HGNC:8508</a> )
<b>Target/Specificity</b>	OXSR1 (AAH08726.1, 1 a.a. ~ 527 a.a) full-length recombinant protein with GST tag. MW of the GST tag alone is 26 KDa.
<b>Dilution</b>	WB~~1:500~1000 IHC~~1:100~500 IF~~1:50~200 E~~N/A
<b>Format</b>	Clear, colorless solution in phosphate buffered saline, pH 7.2 .
<b>Storage</b>	Store at -20°C or lower. Aliquot to avoid repeated freezing and thawing.
<b>Precautions</b>	OXSR1 Antibody (monoclonal) (M16) is for research use only and not for use in diagnostic or therapeutic procedures.

## Background

---

The product of this gene belongs to the Ser/Thr protein kinase family of proteins. It regulates downstream kinases in response to environmental stress, and may play a role in regulating the actin cytoskeleton.

## References

---

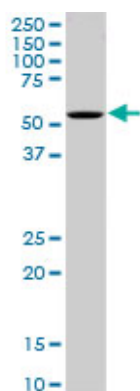
Crystal structure of domain-swapped STE20 OSR1 kinase domain. Lee SJ, et al. Protein Sci, 2009 Feb. PMID 19177573. Structure of the OSR1 kinase, a hypertension drug target. Villa F, et al. Proteins, 2008 Dec. PMID 18831043. Activation of the thiazide-sensitive Na<sup>+</sup>-Cl<sup>-</sup> cotransporter by the WNK-regulated kinases SPAK and OSR1. Richardson C, et al. J Cell Sci, 2008 Mar 1. PMID 18270262. Toward a confocal subcellular atlas of the

human proteome. Barbe L, et al. Mol Cell Proteomics, 2008 Mar. PMID 18029348. Structural insights into the recognition of substrates and activators by the OSR1 kinase. Villa F, et al. EMBO Rep, 2007 Sep. PMID 17721439.

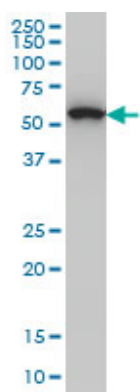
## Images



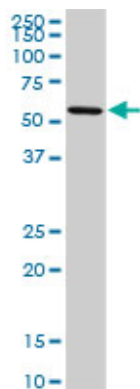
Antibody Reactive Against Recombinant Protein. Western Blot detection against Immunogen (83.71 KDa) .



OXSR1 monoclonal antibody (M16), clone 3A8. Western Blot analysis of OXSR1 expression in PC-12 ( (Cat # AT3162a )

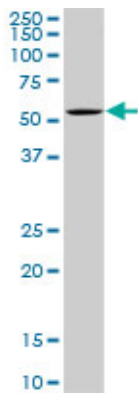


OXSR1 monoclonal antibody (M16), clone 3A8 Western Blot analysis of OXSR1 expression in Hela S3 NE ( (Cat # AT3162a )

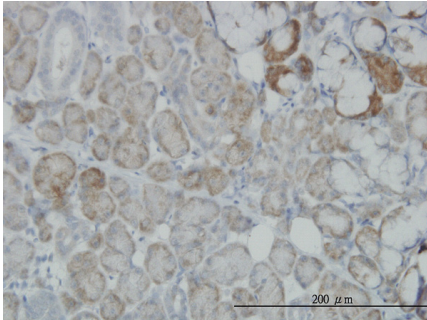


OXSR1 monoclonal antibody (M16), clone 3A8. Western Blot analysis of OXSR1 expression in Raw 264.7 ( (Cat # AT3162a )

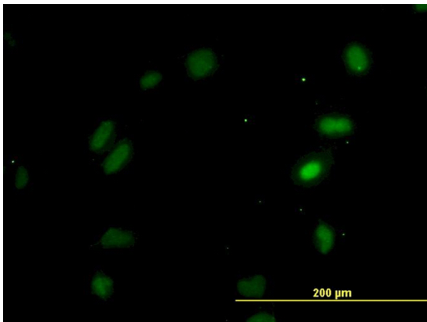
OXSR1 monoclonal antibody (M16), clone 3A8. Western



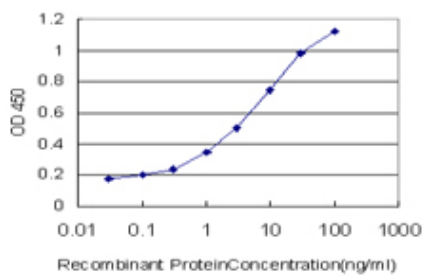
Blot analysis of OXSR1 expression in NIH/3T3 ( (Cat # AT3162a )



Immunoperoxidase of monoclonal antibody to OXSR1 on formalin-fixed paraffin-embedded human salivary gland. [antibody concentration 3 ug/ml]



Immunofluorescence of monoclonal antibody to OXSR1 on HeLa cell. [antibody concentration 30 ug/ml]



Detection limit for recombinant GST tagged OXSR1 is approximately 0.03ng/ml as a capture antibody.

Please note: All products are 'FOR RESEARCH USE ONLY. NOT FOR USE IN DIAGNOSTIC OR THERAPEUTIC PROCEDURES'.