

P15RS Antibody (monoclonal) (M01)

Mouse monoclonal antibody raised against a partial recombinant RPRD1A.

Catalog # AT3165a

Product Information

Application	WB, IHC, E
Primary Accession	Q96P16
Other Accession	NM_018170
Reactivity	Human, Mouse, Rat
Host	mouse
Clonality	monoclonal
Isotype	IgG2b Kappa
Clone Names	1B8
Calculated MW	35720

Additional Information

Gene ID	55197
Other Names	Regulation of nuclear pre-mRNA domain-containing protein 1A, Cyclin-dependent kinase inhibitor 2B-related protein, p15INK4B-related protein, RPRD1A, P15RS
Target/Specificity	RPRD1A (NP_060640, 76 a.a. ~ 170 a.a) partial recombinant protein with GST tag. MW of the GST tag alone is 26 KDa.
Dilution	WB~~1:500~1000 IHC~~1:100~500 E~~N/A
Format	Clear, colorless solution in phosphate buffered saline, pH 7.2 .
Storage	Store at -20°C or lower. Aliquot to avoid repeated freezing and thawing.
Precautions	P15RS Antibody (monoclonal) (M01) is for research use only and not for use in diagnostic or therapeutic procedures.

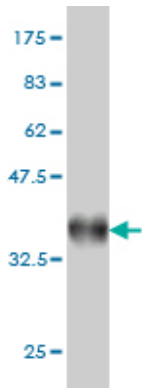
Background

P15RS is upregulated in cells overexpressing cyclin-dependent kinase inhibitor p15(INK4b) (CDKN2B; MIM 600431) and may have a role in cell cycle regulation (Liu et al., 2002 [PubMed 12470661]).

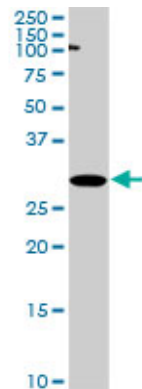
References

Complete sequencing and characterization of 21,243 full-length human cDNAs. Ota T, et al. Nat Genet, 2004 Jan. PMID 14702039. Generation and initial analysis of more than 15,000 full-length human and mouse cDNA sequences. Strausberg RL, et al. Proc Natl Acad Sci U S A, 2002 Dec 24. PMID 12477932. Identification and

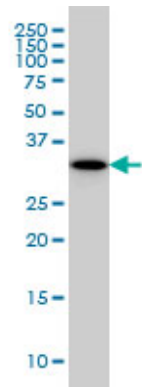
Images



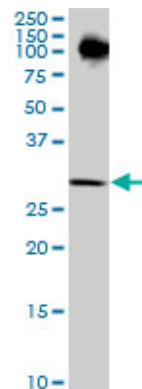
Antibody Reactive Against Recombinant Protein.Western Blot detection against Immunogen (36.19 KDa) .



RPRD1A monoclonal antibody (M01), clone 1B8. Western Blot analysis of RPRD1A expression in PC-12 ((Cat # AT3165a)

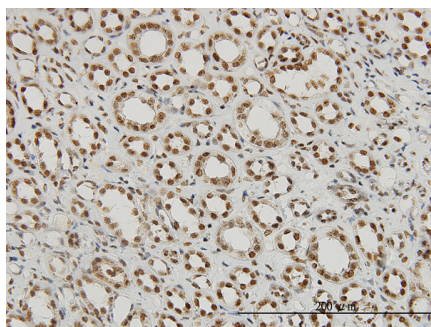


RPRD1A monoclonal antibody (M01), clone 1B8 Western Blot analysis of RPRD1A expression in A-431 ((Cat # AT3165a)

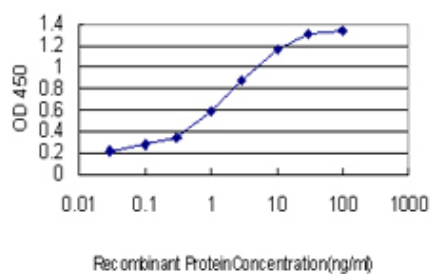


RPRD1A monoclonal antibody (M01), clone 1B8. Western Blot analysis of RPRD1A expression in NIH/3T3 ((Cat # AT3165a)

Immunoperoxidase of monoclonal antibody to RPRD1A on formalin-fixed paraffin-embedded human kidney.



[antibody concentration 3 ug/ml]



Detection limit for recombinant GST tagged RPRD1A is approximately 0.03ng/ml as a capture antibody.

Please note: All products are 'FOR RESEARCH USE ONLY. NOT FOR USE IN DIAGNOSTIC OR THERAPEUTIC PROCEDURES'.