

# PADI2 Antibody (monoclonal) (M01)

Mouse monoclonal antibody raised against a partial recombinant PADI2.

Catalog # AT3168a

## Product Information

---

<b>Application</b>	WB, E
<b>Primary Accession</b>	<a href="#">Q9Y2J8</a>
<b>Other Accession</b>	<a href="#">NM_007365</a>
<b>Reactivity</b>	Human
<b>Host</b>	mouse
<b>Clonality</b>	monoclonal
<b>Isotype</b>	IgG1 Kappa
<b>Clone Names</b>	4D4
<b>Calculated MW</b>	75564

## Additional Information

---

<b>Gene ID</b>	11240
<b>Other Names</b>	Protein-arginine deiminase type-2, PAD-H19, Peptidylarginine deiminase II, Protein-arginine deiminase type II, PADI2, KIAA0994, PDI2
<b>Target/Specificity</b>	PADI2 (NP_003008, 1 a.a. ~ 108 a.a) partial recombinant protein with GST tag. MW of the GST tag alone is 26 KDa.
<b>Dilution</b>	WB~~1:500~1000 E~~N/A
<b>Format</b>	Clear, colorless solution in phosphate buffered saline, pH 7.2 .
<b>Storage</b>	Store at -20°C or lower. Aliquot to avoid repeated freezing and thawing.
<b>Precautions</b>	PADI2 Antibody (monoclonal) (M01) is for research use only and not for use in diagnostic or therapeutic procedures.

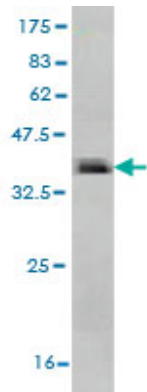
## Background

---

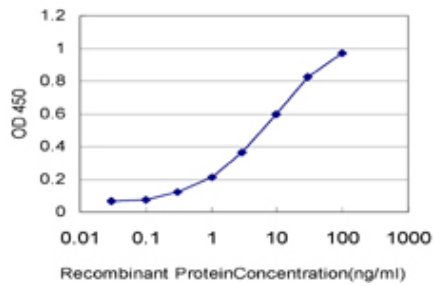
This gene encodes a member of the peptidyl arginine deiminase family of enzymes, which catalyze the post-translational deimination of proteins by converting arginine residues into citrullines in the presence of calcium ions. The family members have distinct substrate specificities and tissue-specific expression patterns. The type II enzyme is the most widely expressed family member. Known substrates for this enzyme include myelin basic protein in the central nervous system and vimentin in skeletal muscle and macrophages. This enzyme is thought to play a role in the onset and progression of neurodegenerative human disorders, including Alzheimer disease and multiple sclerosis, and it has also been implicated in glaucoma pathogenesis. This gene exists in a cluster with four other paralogous genes. [provided by RefSeq]

## Images

---



Antibody Reactive Against Recombinant Protein. Western Blot detection against Immunogen (37.62 KDa) .



Detection limit for recombinant GST tagged PADI2 is approximately 0.3ng/ml as a capture antibody.

Please note: All products are 'FOR RESEARCH USE ONLY. NOT FOR USE IN DIAGNOSTIC OR THERAPEUTIC PROCEDURES'.