

PAFAH1B3 Antibody (monoclonal) (M08)

Mouse monoclonal antibody raised against a full-length recombinant PAFAH1B3.

Catalog # AT3171a

Product Information

Application	WB, E
Primary Accession	Q15102
Other Accession	BC003016
Reactivity	Human, Mouse, Rat
Host	mouse
Clonality	monoclonal
Isotype	IgG2b Kappa
Clone Names	3G6
Calculated MW	25734

Additional Information

Gene ID	5050
Other Names	Platelet-activating factor acetylhydrolase IB subunit gamma, PAF acetylhydrolase 29 kDa subunit, PAF-AH 29 kDa subunit, PAF-AH subunit gamma, PAFAH subunit gamma, PAFAH1B3, PAFAHG
Target/Specificity	PAFAH1B3 (AAH03016, 1 a.a. ~ 231 a.a) full-length recombinant protein with GST tag. MW of the GST tag alone is 26 KDa.
Dilution	WB~~1:500~1000 E~~N/A
Format	Clear, colorless solution in phosphate buffered saline, pH 7.2 .
Storage	Store at -20°C or lower. Aliquot to avoid repeated freezing and thawing.
Precautions	PAFAH1B3 Antibody (monoclonal) (M08) is for research use only and not for use in diagnostic or therapeutic procedures.

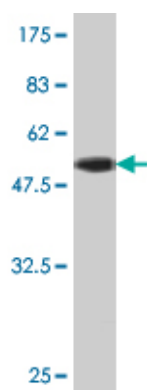
Background

This gene encodes an acetylhydrolase that catalyzes the removal of an acetyl group from the glycerol backbone of platelet-activating factor. The encoded enzyme is a subunit of the platelet-activating factor acetylhydrolase isoform 1B complex, which consists of the catalytic beta and gamma subunits and the regulatory alpha subunit. This complex functions in brain development. A translocation between this gene on chromosome 19 and the CDC-like kinase 2 gene on chromosome 1 has been observed, and was associated with mental retardation, ataxia, and atrophy of the brain. Alternatively spliced transcript variants have been described.

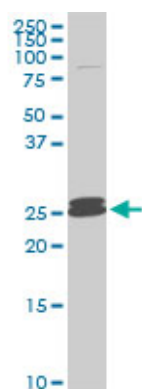
References

Opposing effects of Ndel1 and alpha1 or alpha2 on cytoplasmic dynein through competitive binding to Lis1. Ding C, et al. J Cell Sci, 2009 Aug 15. PMID 19622634. Proteomic analysis of SUMO4 substrates in HEK293 cells under serum starvation-induced stress. Guo D, et al. Biochem Biophys Res Commun, 2005 Dec 2. PMID 16236267. Towards a proteome-scale map of the human protein-protein interaction network. Rual JF, et al. Nature, 2005 Oct 20. PMID 16189514. A human protein-protein interaction network: a resource for annotating the proteome. Stelzl U, et al. Cell, 2005 Sep 23. PMID 16169070. The status, quality, and expansion of the NIH full-length cDNA project: the Mammalian Gene Collection (MGC). Gerhard DS, et al. Genome Res, 2004 Oct. PMID 15489334.

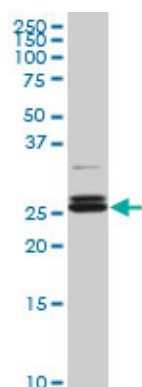
Images



Antibody Reactive Against Recombinant Protein. Western Blot detection against Immunogen (51.15 KDa) .

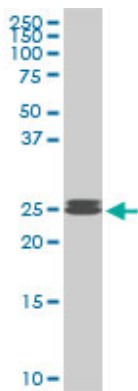


PAFAH1B3 monoclonal antibody (M08), clone 3G6. Western Blot analysis of PAFAH1B3 expression in PC-12 (Cat # AT3171a)

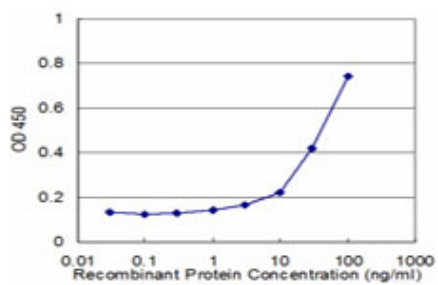
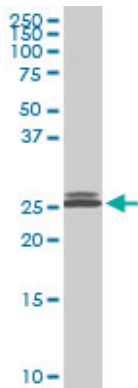


PAFAH1B3 monoclonal antibody (M08), clone 3G6. Western Blot analysis of PAFAH1B3 expression in IMR-32 (Cat # AT3171a)

PAFAH1B3 monoclonal antibody (M08), clone 3G6. Western Blot analysis of PAFAH1B3 expression in Raw 264.7 (Cat # AT3171a)



PAFAH1B3 monoclonal antibody (M08), clone 3G6.
Western Blot analysis of PAFAH1B3 expression in
NIH/3T3 ((Cat # AT3171a)



Detection limit for recombinant GST tagged PAFAH1B3 is
approximately 3ng/ml as a capture antibody.

Please note: All products are 'FOR RESEARCH USE ONLY. NOT FOR USE IN DIAGNOSTIC OR THERAPEUTIC PROCEDURES'.