

## PAK1 Antibody (monoclonal) (M02)

Mouse monoclonal antibody raised against a partial recombinant PAK1.

Catalog # AT3173a

### Product Information

---

<b>Application</b>	WB, IHC, IF, IP, E
<b>Primary Accession</b>	<a href="#">Q13153</a>
<b>Other Accession</b>	<a href="#">NM_002576</a>
<b>Reactivity</b>	Human
<b>Host</b>	mouse
<b>Clonality</b>	monoclonal
<b>Isotype</b>	IgG1 kappa
<b>Clone Names</b>	4D1
<b>Calculated MW</b>	60647

### Additional Information

---

<b>Gene ID</b>	5058
<b>Other Names</b>	Serine/threonine-protein kinase PAK 1, Alpha-PAK, p21-activated kinase 1, PAK-1, p65-PAK, PAK1
<b>Target/Specificity</b>	PAK1 (NP_002567, 191 a.a. ~ 280 a.a) partial recombinant protein with GST tag. MW of the GST tag alone is 26 KDa.
<b>Dilution</b>	WB~~1:500~1000 IHC~~1:100~500 IF~~1:50~200 IP~~N/A E~~N/A
<b>Format</b>	Clear, colorless solution in phosphate buffered saline, pH 7.2 .
<b>Storage</b>	Store at -20°C or lower. Aliquot to avoid repeated freezing and thawing.
<b>Precautions</b>	PAK1 Antibody (monoclonal) (M02) is for research use only and not for use in diagnostic or therapeutic procedures.

### Background

---

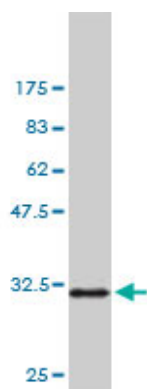
This gene encodes a family member of serine/threonine p21-activating kinases, known as PAK proteins. These proteins are critical effectors that link RhoGTPases to cytoskeleton reorganization and nuclear signaling, and they serve as targets for the small GTP binding proteins Cdc42 and Rac. This specific family member regulates cell motility and morphology. Alternatively spliced transcript variants encoding different isoforms have been found for this gene.

### References

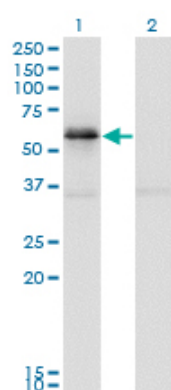
---

- 1.Fragile X Related Protein 1 Clusters with Ribosomes and Messenger RNAs at a Subset of Dendritic Spines in

## Images

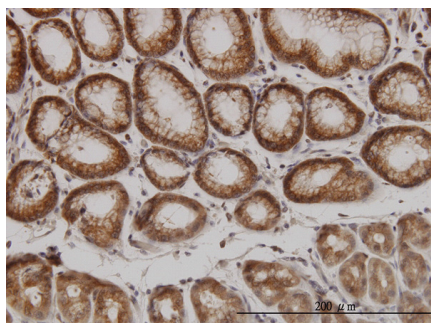


Antibody Reactive Against Recombinant Protein.Western Blot detection against Immunogen (35.53 KDa) .

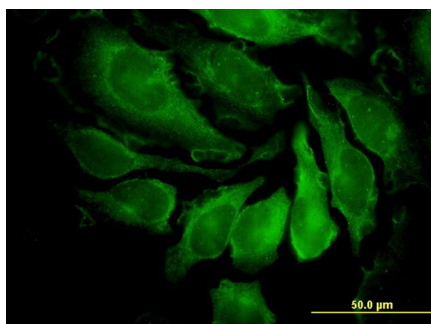


Western Blot analysis of PAK1 expression in transfected 293T cell line by PAK1 monoclonal antibody (M02), clone 4D1.

Lane 1: PAK1 transfected lysate (Predicted MW: 49.6 KDa).  
Lane 2: Non-transfected lysate.

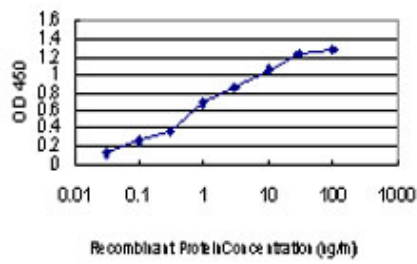
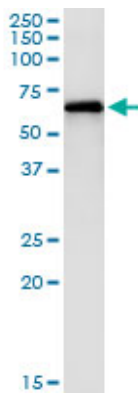


Immunoperoxidase of monoclonal antibody to PAK1 on formalin-fixed paraffin-embedded human stomach. [antibody concentration 3 ug/ml]



Immunofluorescence of monoclonal antibody to PAK1 on HeLa cell. [antibody concentration 35 ug/ml]

Immunoprecipitation of PAK1 transfected lysate using anti-PAK1 monoclonal antibody and Protein A Magnetic Bead ([U0007](#)), and immunoblotted with PAK1 monoclonal antibody.



Detection limit for recombinant GST tagged PAK1 is approximately 0.1ng/ml as a capture antibody.

Please note: All products are 'FOR RESEARCH USE ONLY. NOT FOR USE IN DIAGNOSTIC OR THERAPEUTIC PROCEDURES'.